

# EVENTS PRODUCT CATALOGUE





# Contents



**Temporary Buildings** 9

- Modular Buildings
- Adapted Containers
- Bespoke Buildings
- Ticket Booths & Box Offices



**Sanitation** 29

- Ablutions
- VIP Ablutions
- Showers
- Plumbing Solutions
- Steps



**Catering Facilities** 49

- Fast Food Outlets
- Kitchens
- Refrigerated Containers



**Power Generation** 55

- Generators
- Bunded Fuel Tanks
- Power Distribution
- Cables & Accessories



**Hoist & Access** 77

- Scissor Lifts
- Boom Lifts
- Hoists



**Mobile Lighting** 85



**Climate Control** 89

- Chillers & Air Handlers
- Split Units
- Package Units



**Fencing & Barriers** 95



**Miscellaneous** 99

# BYRNE

## Equipment Rental

Byrne Equipment Rental was founded in the UAE in the early 1990s and since then has grown to become one of the largest plant and equipment rental companies in the Middle East. With 20 operational bases, covering the UAE, KSA, Kuwait, Qatar, Oman and Bahrain, we have a fleet of over **14,000 items** of plant and a team of over **1,500 people**.

We offer high quality equipment rental solutions to a broad variety of industry sectors including:



Oil & Gas



Construction  
& Infrastructure



Events



Manufacturing  
& Logistics



Retail &



Marine  
& Ports



Defense  
& Military



Medical



# BYRNE

## Product Range

Byrne's product range is built upon our successful 'one stop shop' model approach, satisfying all equipment rental requirements across multiple industries. Our rental fleet is constantly updated to carry the latest brands of equipment and technology, **enabling operational efficiency through equipment rental and lease solutions.**

Clients can expect a consistent level of safety awareness throughout the Middle East and the industry sectors that we operate in.



Power  
Generation



Hoist  
& Access



Sanitation



Climate  
Control



Material  
Handling



Temporary  
Buildings



Mobile  
Lighting



Air &  
Steam



Cargo  
Containers



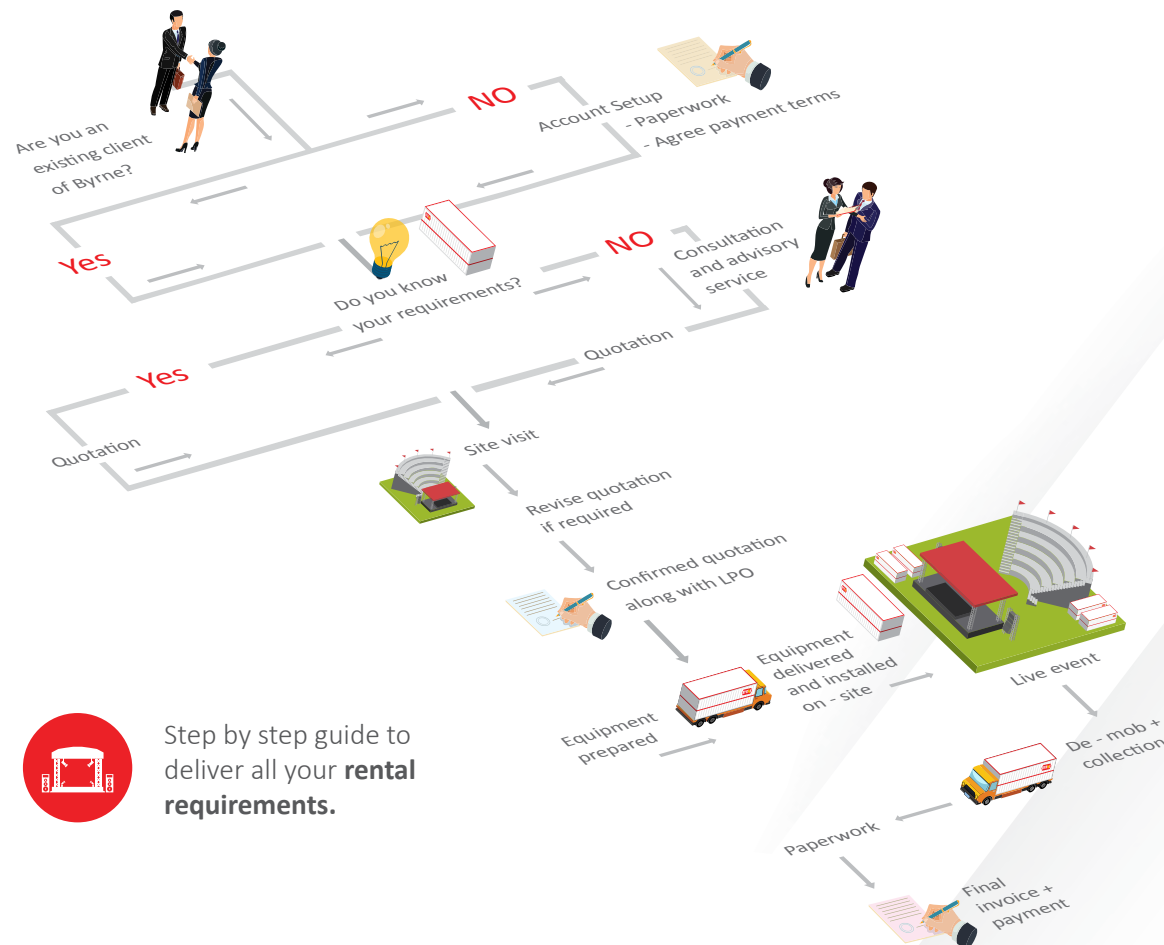
Welding  
Equipment

*We provide the widest range of industrial equipment in the rental market - including rental and long term leasing solutions outside our current fleet.*

# Step by Step Order Process

The growth of the leisure, sport and tourism industries in the Middle East means the demand for customised events is greater than ever, as event organisers aspire to provide the highest quality experience and a memorable occasion.

At Byrne we set the standard for temporary rental equipment with a varied fleet of the highest quality event products combined with fast track delivery. We can deliver a turnkey solution from initial concept to live venue set up.



Step by step guide to deliver all your **rental requirements**.

## Event Hire Desk

The hire desk team receive your enquiry and a dedicated account manager is assigned to be the one point of contact. They review and coordinate the proposal, manage the account set up and ensure all requirements are considered before a comprehensive quotation is issued.

## Delivery & Collection Crew

Our dedicated site managers and crew meet with the client's site representatives to discuss all logistics for delivery and collection of equipment. Often the transport crew must work to strict delivery windows and work cooperatively with multiple suppliers, particularly at large events in inner city areas.

The crew will also liaise with the relevant authorities for application and issuance of any transport permits required and work in accordance with any road restrictions. All loading & offloading of equipment is carried out strictly in accordance with Health & Safety regulations.

## Service Desk & Crew

Byrne operates a 24/7 service desk, dedicated to responding to any site issue which may arise, facilitating rapid deployment of staff when required. In addition, we offer the optional service of a standby crew who remain on site (particularly recommended for live events) to ensure instant attention to any unforeseen technical issues, guaranteeing a smooth running event.

## Sales & Technical Advice

For those client's unsure of their precise technical requirements, our experienced technical team is on hand to provide consultation. Their invaluable knowledge of the sector gained through years of experience provides a significant advantage in being able to provide the appropriate technical solution to satisfy the bespoke requirements of each event.

We are experienced in working to client budgets offering cost effective solutions, recommendations and alternatives.

## Installation & Quality

Upon delivery of the equipment to the site our highly experienced electricians, plumbers, carpenters and AC technicians will commence the installation, working to the agreed install schedule and ensuring final testing and commissioning is completed on time. The equipment and install undergoes a final quality check and sign off with the client ready for the start of the event.

“ I am responsible for the carpentry work on all of the temporary buildings. I will make sure all your ticketing booths, catering cabins, toilets etc, are in pristine condition before delivery, ensuring your product is 100% ready for the event. ”

Balakrishna Thekkiniyakath  
Carpenter



## Temporary Buildings



Byrne has the most varied fleet in the Middle East with custom made green rooms, back stage cabins, site offices, catering cabins and ticket booths.

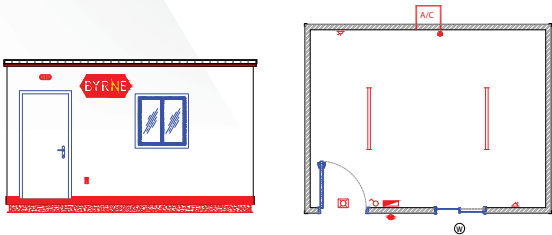
Available in a range of modular sizes and options to link end to end or side by side.

The versatility of the cabins combined with the creative skills of our in-house production team can facilitate the requirement of almost any building imaginable.



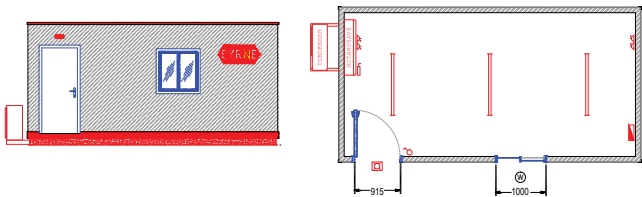
# Temporary Buildings

16’ Open Plan



Specifications	
AC's	Included
Lighting	Included Twin Tube Lights
Power Requirements	32Amp 1 Phase
Blinds	White Venetian
Keys - Security	Lockable – One set issued
Flooring	Vinyl
Transportation Mode	40' Wide Load Trailer
Offloading Requirement	25 Ton Crane
Weight	3 Ton
Measurement	L – 4.8m   H – 3m   W – 3.6m

20’ Open Plan



Specifications	
AC's	Included
Lighting	Included Twin Tube Lights
Power Requirements	32Amp 1 Phase
Blinds	White Venetian
Keys - Security	Lockable – One set issued
Flooring	Vinyl
Transportation Mode	40' Wide Load Trailer
Offloading Requirement	25 Ton Crane
Weight	3 Ton
Measurement	L – 6m   H – 3m   W – 3m

Note: For 40’ Wide Load Trailer transportation will be a Night Load 1:00-5:00am  
For 40’ Standard Trailer transportation can travel during the day except 6:00am – 8:30am, 13:00-15:00, 17:30-20:00

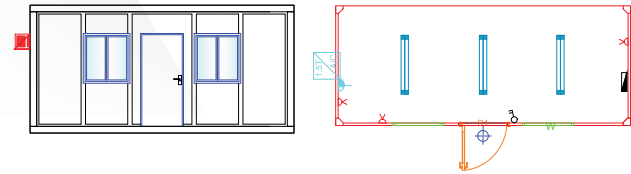


# Modular Buildings

20’ Flat Pack



Refer to pg 20 for bespoke solutions



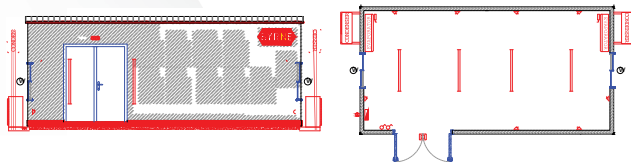
Specifications	
AC's	Included
Lighting	Included Twin Tube Lights
Power Requirements	32Amp 1 Phase
Blinds	White Venetian
Keys - Security	Lockable – One set issued
Flooring	Vinyl
Transportation Mode	40' Standard Trailer
Offloading Requirement	25 Ton Crane
Weight	3 Ton
Measurement	L – 6m   H – 2.8m   W – 2.4m

Note: For 40’ Wide Load Trailer transportation will be a Night Load 1:00-5:00am  
For 40’ Standard Trailer transportation can travel during the day except 6:00am – 8:30am, 13:00-15:00, 17:30-20:00



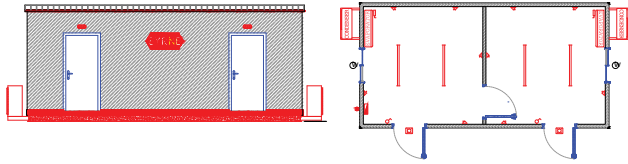
# Temporary Buildings

24' Open Plan



Specifications	
AC's	Included
Lighting	Included Twin Tube Lights
Power Requirements	32Amp 1 Phase
Blinds	White Venetian
Keys - Security	Lockable – One set issued
Flooring	Vinyl
Transportation Mode	40' Wide Load Trailer
Offloading Requirement	25 Ton Crane
Weight	3.5 Ton
Measurement	L – 7.3m   H – 3m   W – 3.6m

24' 2 Room



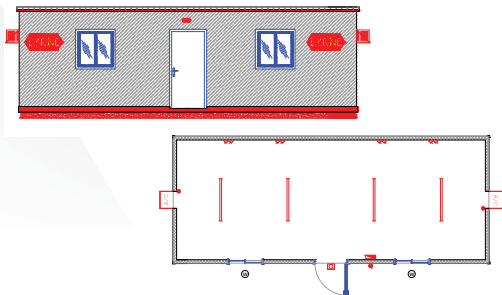
Specifications	
AC's	Included
Lighting	Included Twin Tube Lights
Power Requirements	32Amp 1 Phase
Blinds	White Venetian
Keys - Security	Lockable – One set issued
Flooring	Vinyl
Transportation Mode	40' Wide Load Trailer
Offloading Requirement	25 Ton Crane
Weight	3.5 Ton
Measurement	L – 7.3m   H – 3m   W – 3.6m

Note: For 40' Wide Load Trailer transportation will be a Night Load 1:00-5:00am  
For 40' Standard Trailer transportation can travel during the day except 6:00am – 8:30am, 13:00-15:00, 17:30-20:00



# Modular Buildings

30' Open Plan

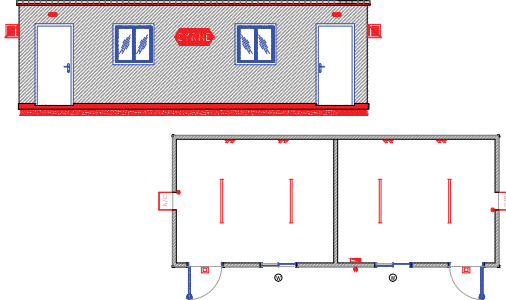


Specifications	
AC's	Included
Lighting	Included Twin Tube Lights
Power Requirements	32Amp 1 Phase
Blinds	White Venetian
Keys - Security	Lockable – One set issued
Flooring	Vinyl
Transportation Mode	40' Wide Load Trailer
Offloading Requirement	50 Ton Crane
Weight	4 Ton
Measurement	L – 8.9m   H – 3m   W – 3.6m

Note: For 40' Wide Load Trailer transportation will be a Night Load 1:00-5:00am  
For 40' Standard Trailer transportation can travel during the day except 6:00am – 8:30am, 13:00-15:00, 17:30-20:00



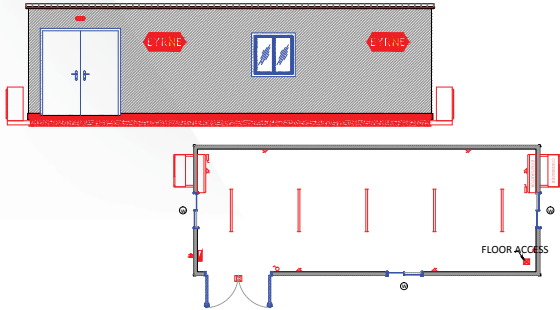
30' 2 Room



Specifications	
AC's	Included
Lighting	Included Twin Tube Lights
Power Requirements	32Amp 1 Phase
Blinds	White Venetian
Keys - Security	Lockable – One set issued
Flooring	Vinyl
Transportation Mode	40' Wide Load Trailer
Offloading Requirement	50 Ton Crane
Weight	4 Ton
Measurement	L – 8.9m   H – 3m   W – 3.6m

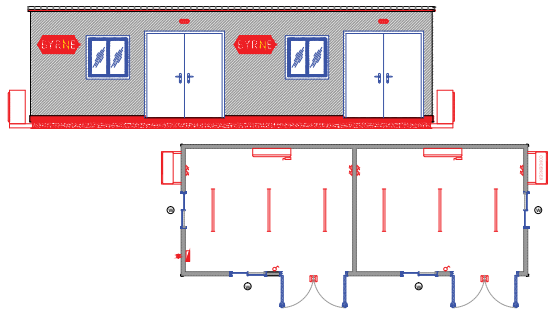
# Temporary Buildings

32’ Open Plan



Specifications	
AC's	Included
Lighting	Included Twin Tube Lights
Power Requirements	32Amp 1 Phase
Blinds	White Venetian
Keys - Security	Lockable – One set issued
Flooring	Vinyl
Transportation Mode	40’ Wide Load Trailer
Offloading Requirement	50 Ton Crane
Weight	4 Ton
Measurement	L – 9.7m   H – 3m   W – 3.6m

32’ 2 Room



Specifications	
AC's	Included
Lighting	Included Twin Tube Lights
Power Requirements	32Amp 1 Phase
Blinds	White Venetian
Keys - Security	Lockable – One set issued
Flooring	Vinyl
Transportation Mode	40’ Wide Load Trailer
Offloading Requirement	50 Ton Crane
Weight	4 Ton
Measurement	L – 9.7m   H – 3m   W – 3.6m

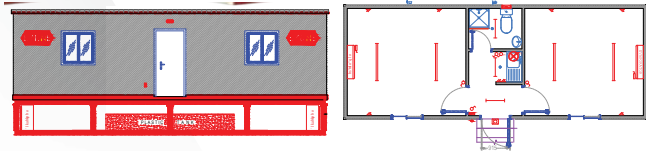
Note: For 40’ Wide Load Trailer transportation will be a Night Load 1:00-5:00am  
For 40’ Standard Trailer transportation can travel during the day except 6:00am – 8:30am, 13:00-15:00, 17:30-20:00



# Modular Buildings



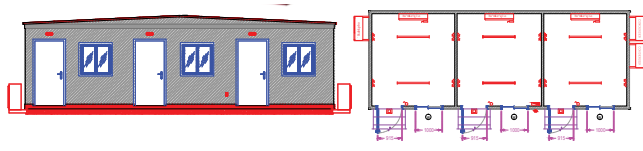
32’ 2 Room with WC & Pantry



Specifications*	
AC's	Included
Lighting	Included Twin Tube Lights
Power Requirements	32Amp 1 Phase
Blinds	White Venetian
Keys - Security	Lockable – One set issued
Flooring	Vinyl
Transportation Mode	40’ Wide Load Trailer
Offloading Requirement	50 Ton Crane
Weight	9 Ton
Measurement	L – 9.7m   H – 3.7m   W – 3.6m

Note: For 40’ Wide Load Trailer transportation will be a Night Load 1:00-5:00am  
For 40’ Standard Trailer transportation can travel during the day except 6:00am – 8:30am, 13:00-15:00, 17:30-20:00  
\*All buildings with WC have built in septic tanks but external water tank required.

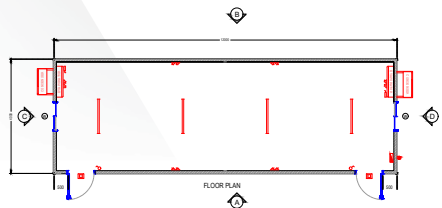
32’ 3 Room



Specifications	
AC's	Included
Lighting	Included Twin Tube Lights
Power Requirements	32Amp 1 Phase
Blinds	White Venetian
Keys - Security	Lockable – One set issued
Flooring	Vinyl
Transportation Mode	40’ Wide Load Trailer
Offloading Requirement	50 Ton Crane
Weight	4.5 Ton
Measurement	L – 9.7m   H – 3.2m   W – 3.6m

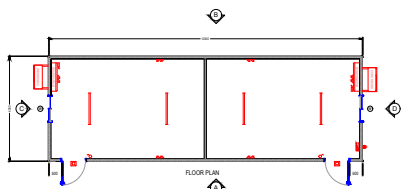
# Temporary Buildings

40' Open Plan



Specifications	
AC's	Included
Lighting	Included Twin Tube Lights
Power Requirements	32Amp 1 Phase
Blinds	White Venetian
Keys - Security	Lockable – One set issued
Flooring	Vinyl
Transportation Mode	40' Wide Load Trailer
Offloading Requirement	50 Ton Crane
Weight	5.5 Ton
Measurement	L – 12m   H – 3.2m   W – 4m

40' 2 Room



Specifications	
AC's	Included
Lighting	Included Twin Tube Lights
Power Requirements	32Amp 1 Phase
Blinds	White Venetian
Keys - Security	Lockable – One set issued
Flooring	Vinyl
Transportation Mode	40' Wide Load Trailer
Offloading Requirement	50 Ton Crane
Weight	5.5 Ton
Measurement	L – 12m   H – 3.2m   W – 4m

Note: For 40' Wide Load Trailer transportation will be a Night Load 1:00-5:00am  
For 40' Standard Trailer transportation can travel during the day except 6:00am – 8:30am, 13:00-15:00, 17:30-20:00

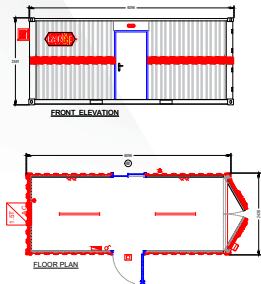


## Modular Buildings

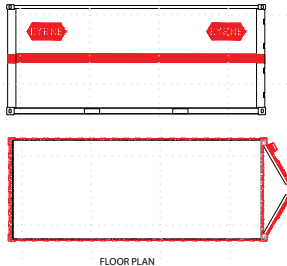


# Temporary Buildings

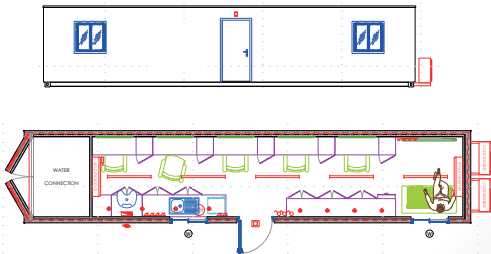
20' Office Container



20' Storage Container



40' Make Up Container



Specifications	
AC's	Included
Lighting	Included Twin Tube Lights
Power Requirements	32Amp 1 Phase
Blinds	Yes
Keys - Security	Lockable – One set issued
Flooring	Vinyl
Transportation Mode	40' Standard Trailer
Offloading Requirement	25 Ton Crane
Weight	4 Ton
Measurement	L – 6m   H – 2.59m   W – 2.4m

Specifications	
AC's	N/A
Lighting	N/A
Power Requirements	N/A
Blinds	N/A
Keys - Security	Lockable – One set issued
Flooring	Steel Floor
Transportation Mode	40' Standard Trailer
Offloading Requirement	25 Ton Crane
Weight	4 Ton
Measurement	L – 6m   H – 2.59m   W – 2.4m

Specifications	
AC's	Included
Lighting	Included Twin Tube Lights
Power Requirements	32Amp 1 Phase
Blinds	White Venetian
Keys - Security	Lockable – One set issued
Flooring	Vinyl
Transportation Mode	40' Standard Trailer
Offloading Requirement	50 Ton Crane
Weight	10 Ton
Measurement	L – 12m   H – 2.68m   W – 2.4m

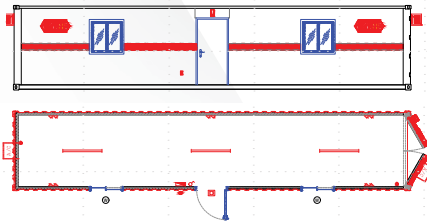
Note: For 40' Wide Load Trailer transportation will be a Night Load 1:00-5:00am  
For 40' Standard Trailer transportation can travel during the day except 6:00am – 8:30am, 13:00-15:00, 17:30-20:00



## Adapted Containers



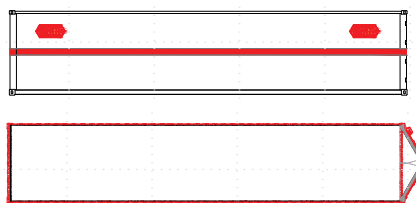
40' Office Container



Specifications	
AC's	Included
Lighting	Included Twin Tube Lights
Power Requirements	32Amp 1 Phase
Blinds	White Venetian
Keys - Security	Lockable – One set issued
Flooring	Vinyl Floor
Transportation Mode	40' Standard Trailer
Offloading Requirement	50 Ton Crane
Weight	8 Ton
Measurement	L – 12m   H – 2.59m   W – 2.4m

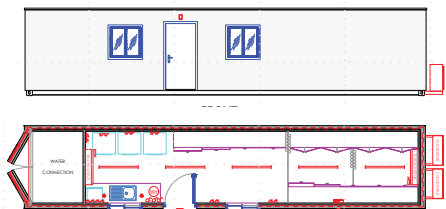
Note: For 40' Wide Load Trailer transportation will be a Night Load 1:00-5:00am  
For 40' Standard Trailer transportation can travel during the day except 6:00am – 8:30am, 13:00-15:00, 17:30-20:00

40' Storage Container



Specifications	
AC's	N/A
Lighting	N/A
Power Requirements	N/A
Blinds	N/A
Keys - Security	Lockable – One set issued padlock
Flooring	Steel Floor
Transportation Mode	40' Standard Trailer
Offloading Requirement	50 Ton Crane
Weight	8 Ton
Measurement	L – 12m   H – 2.59m   W – 2.4m

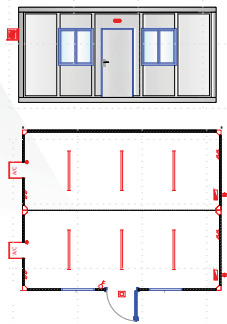
40' Wardrobe Container



Specifications	
AC's	Included
Lighting	Included Twin Tube Lights
Power Requirements	32Amp 1 Phase
Blinds	White Venetian
Keys - Security	Lockable – One set issued
Flooring	Vinyl
Transportation Mode	40' Standard Trailer
Offloading Requirement	50 Ton Crane
Weight	10 Ton
Measurement	L – 12m   H – 2.68m   W – 2.4m

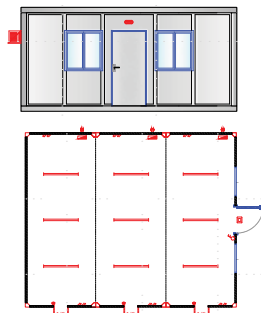
# Temporary Buildings

20' Flatpacks - 20'X16'



Specifications	
AC's	Included
Lighting	Included Twin Tube Lights
Power Requirements	2 x 32Amp 1 Phase
Keys - Security	Lockable – One set issued
Flooring	Vinyl
Transportation Mode	40' Standard Trailer
Offloading Requirement	7 Ton Hiab / 5 Ton Forklift (extended arms)
Weight	2 x 2.5 Ton
Measurement	L - 6m   H - 2.8m   W - 4.8m

20' Flatpacks - 20'X24'



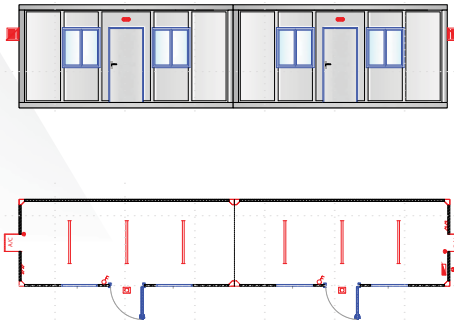
Specifications	
AC's	Included
Lighting	Included Twin Tube Lights
Power Requirements	3 x 32Amp 1 Phase
Keys - Security	Lockable – One set issued
Flooring	Vinyl
Transportation Mode	40' Standard Trailer
Offloading Requirement	7 Ton Hiab / 5 Ton Forklift (extended arms)
Weight	3 x 2.5 Ton
Measurement	L - 6m   H - 2.8m   W - 7.2m

Note: For 40' Wide Load Trailer transportation will be a Night Load 1:00-5:00am  
For 40' Standard Trailer transportation can travel during the day except 6:00am – 8:30am, 13:00-15:00, 17:30-20:00



# Bespoke Buildings

20' Flatpacks - 40'X8'

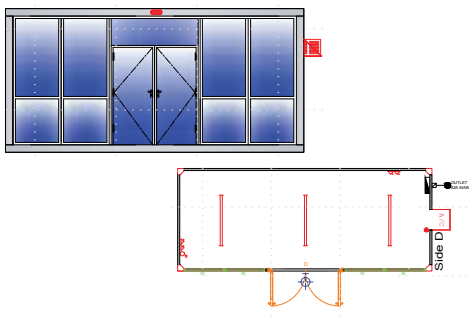


Specifications	
AC's	Included
Lighting	Included Twin Tube Lights
Power Requirements	2 x 32Amp 1 Phase
Keys - Security	Lockable – One set issued
Flooring	Vinyl
Transportation Mode	40' Standard trailer
Offloading Requirement	7 Ton Hiab / 5 Ton Forklift (extended arms)
Weight	2 x 2.5 Ton
Measurement	L - 12m   H - 2.8m   W - 2.4m

Note: For 40' Wide Load Trailer transportation will be a Night Load 1:00-5:00am  
For 40' Standard Trailer transportation can travel during the day except 6:00am – 8:30am, 13:00-15:00, 17:30-20:00



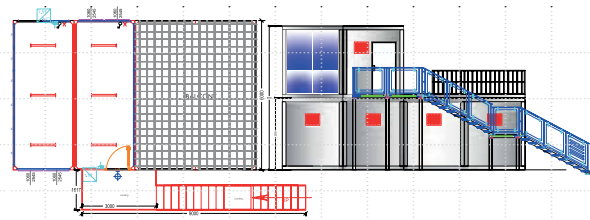
20' Flatpack Hospitality Unit



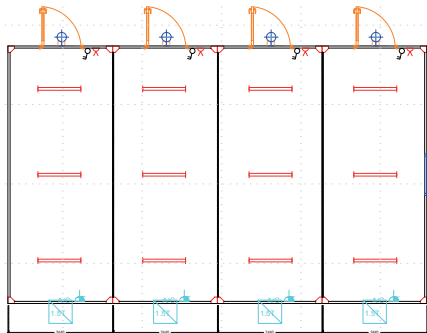
Specifications	
AC's	Included
Lighting	Included Twin Tube Lights
Power Requirements	32Amp 1 Phase
Blinds	N/A
Keys - Security	Lockable – One set issued
Flooring	Vinyl
Transportation Mode	40' Standard Trailer
Offloading Requirement	25 Ton Crane
Weight	2.5 Ton
Measurement	L – 6m   H – 2.8m   W – 2.4m

# Temporary Buildings

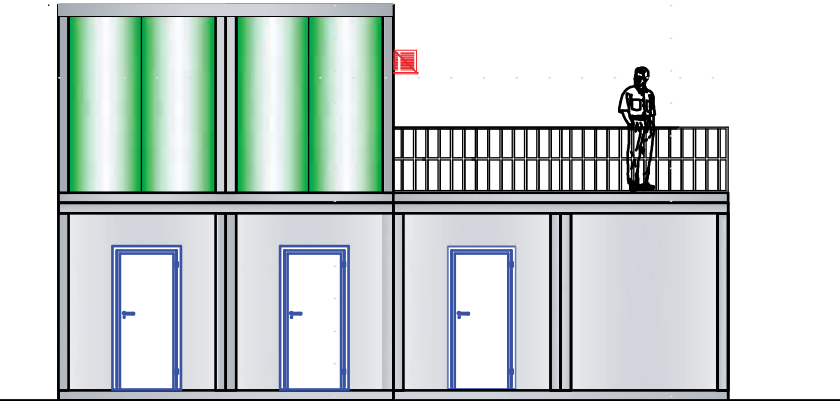
## 2 Storey Structures



First Floor



Ground Floor



Specifications	
AC's	Included
Lighting	Included Twin Tube Lights
Power Requirements	6 x 32Amp 1 Phase
Keys - Security	Lockable – One set issued
Flooring	Vinyl
Transportation Mode	40' Standard Trailer
Offloading Requirement	25 Ton Crane
Weight	6 x 2.5 Ton
Measurement of each section	L – 6m   H – 2.8m   W – 2.4m

Note: For 40' Wide Load Trailer transportation will be a Night Load 1:00-5:00am  
For 40' Standard Trailer transportation can travel during the day except 6:00am – 8:30am, 13:00-15:00, 17:30-20:00



# Bespoke Buildings



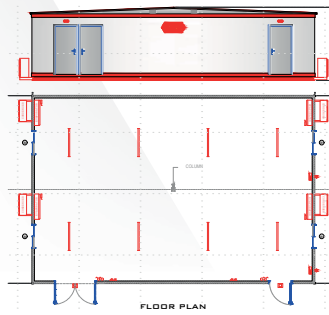
## 40' Exhibitions Units

Specifications	
AC's	N/A
Lighting	Included Twin Tube Lights
Sockets /Power Requirements	32Amp 1 Phase
Blinds	N/A
Keys - Security	N/A
Flooring	Vinyl
Transportation Mode	40' Wide Load Trailer
Offloading Requirement	50 Ton Crane
Weight	5.5 Ton
Measurement	L – 12m   H – 3.2m   W – 4m

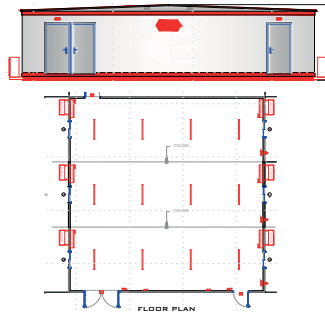
Note: For 40' Wide Load Trailer transportation will be a Night Load 1:00-5:00am  
For 40' Standard Trailer transportation can travel during the day except 6:00am – 8:30am, 13:00-15:00, 17:30-20:00

# Temporary Buildings

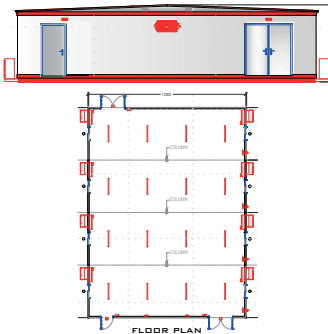
Sections - 96m<sup>2</sup> Cabin



Sections - 144m<sup>2</sup> Cabin



Sections - 192m<sup>2</sup> Cabin



Specifications	
AC's	Included
Lighting	Included Twin Tube Lights
Power Requirements	2 x 32Amp 1 Phase
Blinds	White Venetian
Keys - Security	Lockable – One set issued
Flooring	Vinyl
Transportation Mode	2 x 40' Wide Load Trailer
Offloading Requirement	50 Ton Crane
Weight	2 x 5.5 Ton
Measurement	L – 12m   H – 3.2m   W – 8m

Specifications	
AC's	Included
Lighting	Included Twin Tube Lights
Power Requirements	3 x 32Amp 1 Phase
Blinds	White Venetian
Keys - Security	Lockable – One set issued
Flooring	Vinyl
Transportation Mode	3 x 40' Wide Load Trailer
Offloading Requirement	50 Ton Crane
Weight	3 x 5.5 Ton
Measurement	L – 12m   H – 3.2m   W – 12m

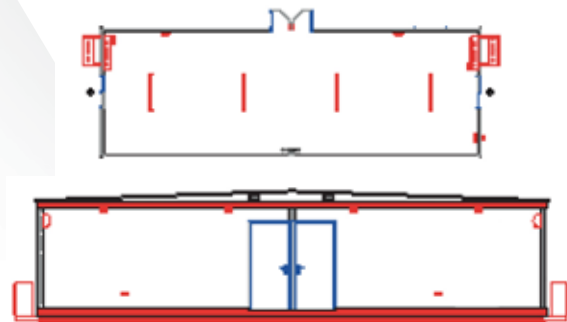
Specifications	
AC's	Included
Lighting	Included Twin Tube Lights
Power Requirements	4 x 32Amp 1 Phase
Blinds	White Venetian
Keys - Security	Lockable – One set issued
Flooring	Vinyl
Transportation Mode	4 x 40' Wide Load Trailer
Offloading Requirement	50 Ton Crane
Weight	4 x 5.5 Ton
Measurement	L – 12m   H – 3.2m   W – 16m

Note: For 40' Wide Load Trailer transportation will be a Night Load 1:00-5:00am  
For 40' Standard Trailer transportation can travel during the day except 6:00am – 8:30am, 13:00-15:00, 17:30-20:00



## Bespoke Buildings

OCH Sections - 40'X12' End Section

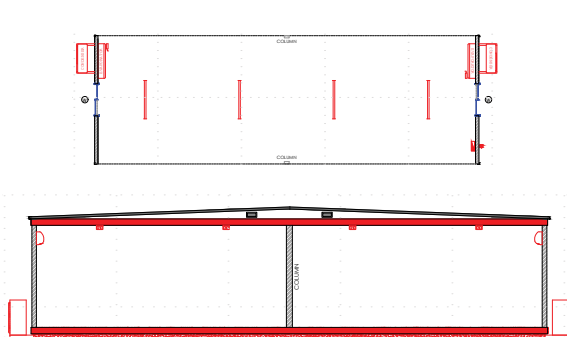


Specifications	
AC's	Included
Lighting	Included Twin Tube Lights
Power Requirements	32Amp 1 Phase
Keys - Security	Lockable – One set issued
Flooring	Vinyl
Transportation Mode	40' Wide Load Trailer
Offloading Requirement	50 Ton Crane
Weight	5.5 Ton
Measurement	L - 12m   H - 3.2m   W - 4m

Note: For 40' Wide Load Trailer transportation will be a Night Load 1:00-5:00am  
For 40' Standard Trailer transportation can travel during the day except 6:00am – 8:30am, 13:00-15:00, 17:30-20:00



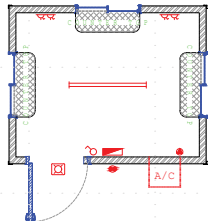
OCH Sections - 40'X12' Middle Section



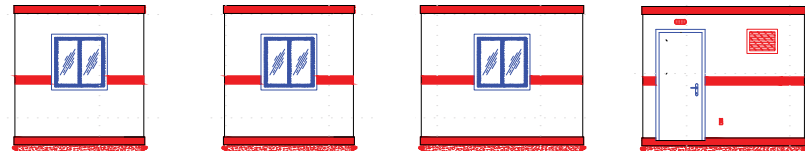
Specifications	
AC's	Included
Lighting	Included Twin Tube Lights
Power Requirements	32Amp 1 Phase
Keys - Security	Lockable – One set issued
Flooring	Vinyl
Transportation Mode	40' Wide Load Trailer
Offloading Requirement	50 Ton Crane
Weight	5.5 Ton
Measurement	L - 12m   H - 3.2m   W - 4m

# Temporary Buildings

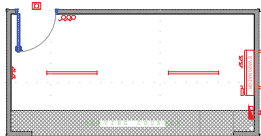
10' Ticket Booth



Specifications	
AC's	Included
Lighting	Included Twin Tube Lights
Power Requirements	32Amp 1 Phase
Keys - Security	Lockable – One set issued
Flooring	Vinyl
Transportation Mode	40' Standard Trailer
Offloading Requirement	7 Ton Hiab
Weight	1.5 Ton
Measurement	L – 3m   H – 2.7m   W – 2.4m



20' Box Office



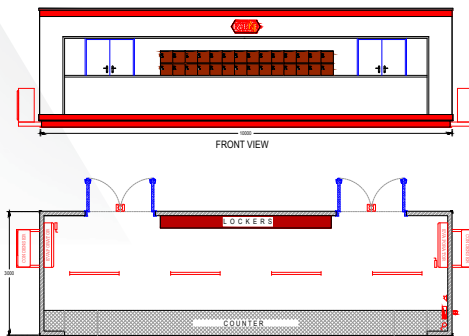
Specifications	
AC's	Included
Lighting	Included Twin Tube Lights
Power Requirements	32Amp 1 Phase
Keys - Security	Lockable – One set issued
Flooring	Vinyl
Transportation Mode	40' Wide Load Trailer
Offloading Requirement	25 Ton Crane
Weight	3 Ton
Measurement	L – 6m   H – 3m   W – 3m

Note: For 40' Wide Load Trailer transportation will be a Night Load 1:00-5:00am  
For 40' Standard Trailer transportation can travel during the day except 6:00am – 8:30am, 13:00-15:00, 17:30-20:00



## Ticket Booths and Box Offices

32' Cabin Camera Lockers

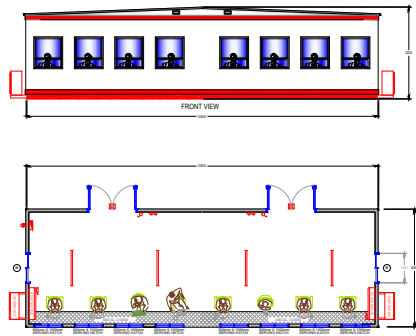


Specifications	
AC's	Included
Lighting	Included Twin Tube Lights
Power Requirements	32Amp 1 Phase
Keys - Security	Lockable – One set issued
Flooring	Vinyl
Transportation Mode	40' Wide Load Trailer
Offloading Requirement	50 Ton Crane
Weight	5.5 Ton
Measurement	L – 9.7m   H – 3m   W – 3.6m

Note: For 40' Wide Load Trailer transportation will be a Night Load 1:00-5:00am  
For 40' Standard Trailer transportation can travel during the day except 6:00am – 8:30am, 13:00-15:00, 17:30-20:00



40' Box Office



Specifications	
AC's	Included
Lighting	Included Twin Tube Lights
Power Requirements	32Amp 1 Phase
Keys - Security	Lockable – One set issued
Flooring	Vinyl
Transportation Mode	40' Wide Load Trailer
Offloading Requirement	50 Ton Crane
Weight	5.5 Ton
Measurement	L – 12m   H – 3.2m   W – 4m

“ My job is to ensure all sanitation units are checked prior to delivery. Onsite I will monitor and manage water and waste to ensure your event goes without a hitch. ”

**Halim Ahmed**  
Plumber



# Sanitation

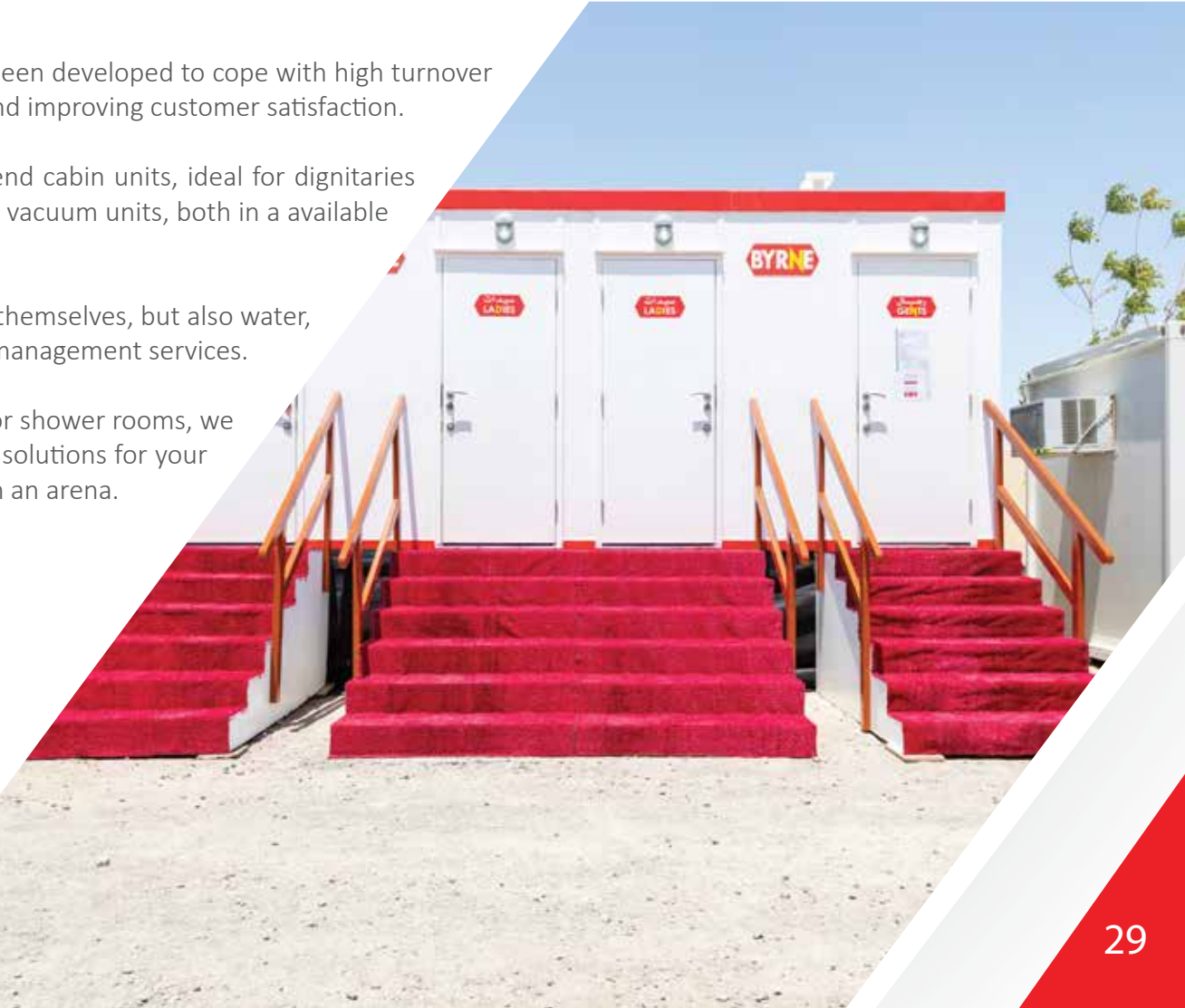


Our sanitation units have been developed to cope with high turnover events, reducing queues and improving customer satisfaction.

Our VIP ablution ranges from high end cabin units, ideal for dignitaries and artists to a new range of flexiloo vacuum units, both in a available flatpack or a trailer set up.

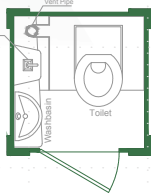
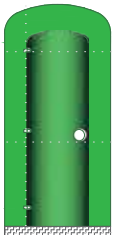
We provide not only the toilet units themselves, but also water, sewage, consumables and cleaning management services.

If you need baby changing facilities or shower rooms, we provide those too and have suitable solutions for your event whether it's on the beach or in an arena.



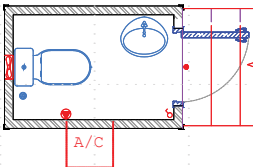
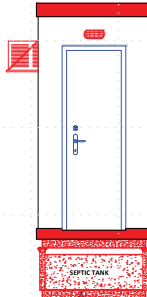
# Sanitation

Portaloo



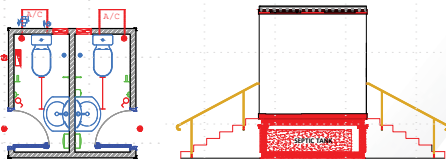
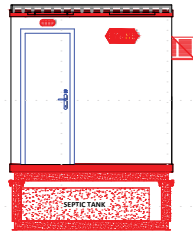
Specifications	
AC's	N/A
Lighting	N/A
Power Requirements	N/A
Keys - Security	N/A
Flooring	N/A
Transportation Mode	3 Ton HIAB
Offloading Requirement	3 Ton Forklift
Weight	80kg (empty)
Measurement	L – 1.1m   H – 2.2m   W – 1.1m

4' Single Unit



Specifications*	
AC's	Included
Lighting	Included Twin Tube Lights
Power Requirements	32Amp 1 Phase
Keys - Security	Lockable – One set issued
Flooring	Vinyl
Transportation Mode	40' Standard Trailer
Offloading Requirement	3 Ton Forklift
Weight	1 Ton (empty)
Measurement	L – 1.2m   H – 3.4m   W – 1.5m

8x8' 1 + 1



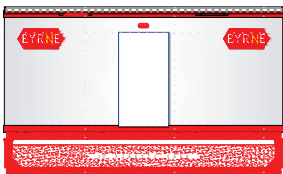
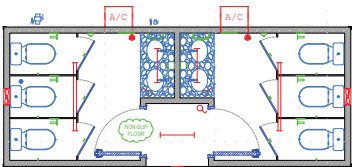
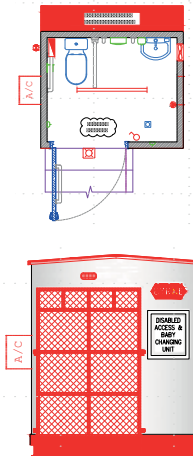
Specifications*	
AC's	Included
Lighting	Included Twin Tube Lights
Power Requirements	32Amp 1 Phase
Keys - Security	Lockable – One set issued
Flooring	Vinyl
Transportation Mode	40' Standard Trailer
Offloading Requirement	25 Ton Crane
Weight	3 Ton (empty)
Measurement	L – 2.4m   H – 3.6m   W – 2.4m



# Ablutions

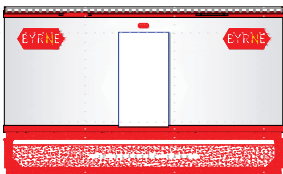
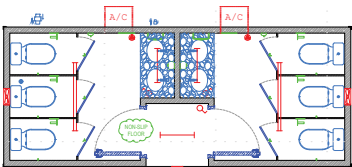


8' People of Determination



Specifications*	
AC's	Included
Lighting	Included Twin Tube Lights
Power Requirements	32Amp 1 Phase
Keys - Security	Lockable – One set issued
Flooring	Vinyl (non slip)
Transportation Mode	40' Standard Trailer
Offloading Requirement	25 Ton Crane
Weight	2.5 Ton (empty)
Measurement	L – 2.5m   H – 2.9m   W – 2.5m
Door Width	1.25m
Ramp Length	2.2m

20' 3 + 3



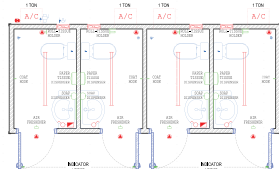
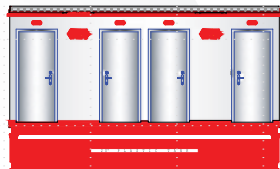
Specifications*	
AC's	Included
Lighting	Included Twin Tube Lights
Power Requirements	32Amp 1 Phase
Keys - Security	Lockable – One set issued
Flooring	Vinyl
Transportation Mode	40' Standard Trailer
Offloading Requirement	25 Ton Crane
Weight	8.5 Ton (empty)
Measurement	L – 6m   H – 3.7m   W – 2.4m

Note: For 40' Wide Load Trailer transportation will be a Night Load 1:00-5:00am  
For 40' Standard Trailer transportation can travel during the day except 6:00am – 8:30am, 13:00-15:00, 17:30-20:00  
\* All abluion units have built in septic tanks but additional external water tank is required.

Note: For 40' Wide Load Trailer transportation will be a Night Load 1:00-5:00am  
For 40' Standard Trailer transportation can travel during the day except 6:00am – 8:30am, 13:00-15:00, 17:30-20:00  
\* All abluion units have built in septic tanks but additional external water tank is required.

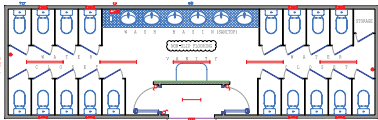
# Sanitation

20' 4 Door



Specifications*	
AC's	Included
Lighting	Included Twin Tube Lights
Power Requirements	32Amp 3 Phase
Keys - Security	Lockable – One set issued
Flooring	Vinyl
Transportation Mode	40' Standard Trailer
Offloading Requirement	25 Ton Crane
Weight	8 Ton (empty)
Measurement	L – 6m   H – 3.7m   W – 2.4m

40' All Female

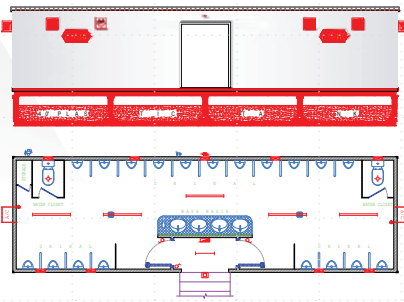


Specifications*	
AC's	Included
Lighting	Included Twin Tube Lights
Power Requirements	32Amp 3 Phase
Keys - Security	Lockable – One set issued
Flooring	Vinyl
Transportation Mode	40' Wide Load Trailer
Offloading Requirement	50 Ton Crane
Weight	14 Ton (empty)
Measurement	L – 12m   H – 3.78m   W – 3.66m



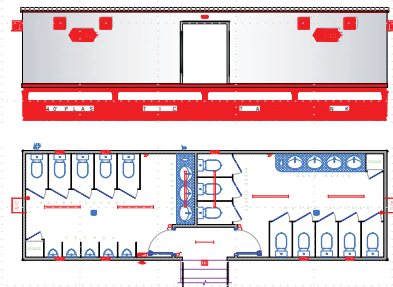
# Ablutions

40' All Male



Specifications*	
AC's	Included
Lighting	Included Twin Tube Lights
Power Requirements	32Amp 1 Phase
Keys - Security	Lockable – One set issued
Flooring	Vinyl
Transportation Mode	40' Wide Load Trailer
Offloading Requirement	50 Ton Crane
Weight	12 Ton (empty)
Measurement	L – 12m   H – 3.78m   W – 3.66m

40' Split



Specifications*	
AC's	Included
Lighting	Included Twin Tube Lights
Power Requirements	32Amp 1 Phase
Keys - Security	Lockable – One set issued
Flooring	Vinyl
Transportation Mode	40' Wide Load Trailer
Offloading Requirement	50 Ton Crane
Weight	13 Ton (empty)
Measurement	L – 12m   H – 3.78m   W – 3.66m

Note: For 40' Wide Load Trailer transportation will be a Night Load 1:00-5:00am  
For 40' Standard Trailer transportation can travel during the day except 6:00am – 8:30am, 13:00-15:00, 17:30-20:00  
\* All ablution units have built in septic tanks but additional external water tank is required.

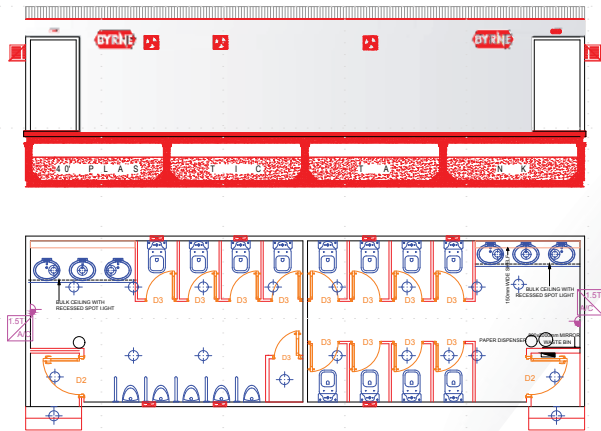
Note: For 40' Wide Load Trailer transportation will be a Night Load 1:00-5:00am  
For 40' Standard Trailer transportation can travel during the day except 6:00am – 8:30am, 13:00-15:00, 17:30-20:00  
\* All ablution units have built in septic tanks but additional external water tank is required.

# Sanitation

40' Split End Door



Specifications*	
AC's	Included
Lighting	Included Twin Tube Lights
Power Requirements	32Amp 1 Phase
Keys - Security	Lockable – One set issued
Flooring	Vinyl
Transportation Mode	40' Wide Load Trailer
Offloading Requirement	50 Ton Crane
Weight	14 Ton (empty)
Measurement	L – 12m   H – 3.75m   W – 3.66m



Note: For 40' Wide Load Trailer transportation will be a Night Load 1:00-5:00am  
For 40' Standard Trailer transportation can travel during the day except 6:00am – 8:30am, 13:00-15:00, 17:30-20:00.  
\* All ablation units have built in septic tanks but additional external water tank is required.

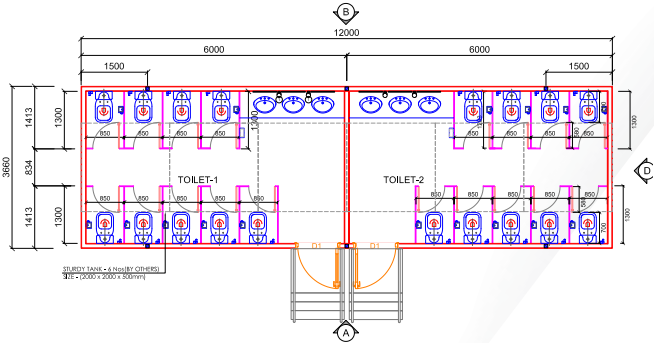


# Ablutions

40' x 12' Universal Toilet



Specifications*	
AC's	Included
Lighting	Included Twin Tube Lights
Power Requirements	32Amp 1 Phase
Keys - Security	Lockable – One set issued
Flooring	Vinyl
Transportation Mode	40' Wide Load Trailer
Offloading Requirement	50 Ton Crane
Weight	14 Ton (empty)
Measurement	L – 12m   H – 3.75m   W – 3.66m

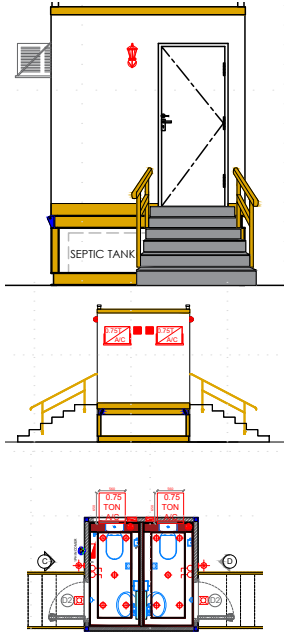


Note: For 40' Wide Load Trailer transportation will be a Night Load 1:00-5:00am  
For 40' Standard Trailer transportation can travel during the day except 6:00am – 8:30am, 13:00-15:00, 17:30-20:00.  
\* All ablation units have built in septic tanks but additional external water tank is required.



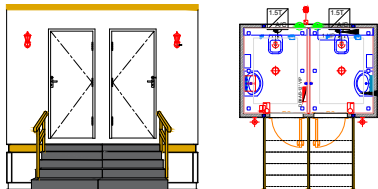
# Sanitation

8' X 8' 1+1 VIP



Specifications*	
AC's	Included
Lighting	Included Twin Tube Lights
Power Requirements	N/A
Keys - Security	Lockable – One set issued
Flooring	Vinyl
Transportation Mode	40' Standard Trailer
Offloading Requirement	25 Ton Crane
Weight	3.5 Ton (empty)
Measurement	L – 2.4m   H – 3.65m   W – 2.4m

8' X 12' 1+1 VIP



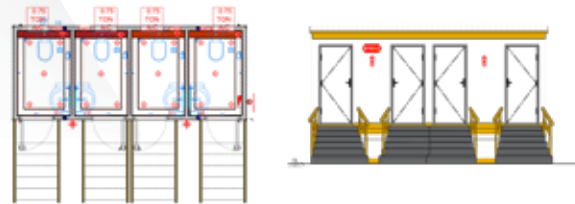
Specifications*	
AC's	Included
Lighting	Spot Lights
Power Requirements	32Amp 1 Phase
Keys - Security	Lockable – One set issued
Flooring	Vinyl
Transportation Mode	40' Standard Load Trailer
Offloading Requirement	25 Ton Crane
Weight	3.5 Ton (empty)
Measurement	L – 3.8m   H – 3.6m   W – 2.4m

Note: For 40' Wide Load Trailer transportation will be a Night Load 1:00-5:00am  
For 40' Standard Trailer transportation can travel during the day except 6:00am – 8:30am, 13:00-15:00, 17:30-20:00  
\* All abluion units have built in septic tanks but additional external water tank is required.



## VIP Ablutions

20' 4 Door VIP



Specifications*	
AC's	Included
Lighting	VIP Dome Light
Power Requirements	32Amp 1 Phase
Keys - Security	Lockable – One set issued
Flooring	Vinyl
Transportation Mode	40' Standard Load Trailer
Offloading Requirement	25 Ton Crane
Weight	8.5 Ton (empty)
Measurement	L – 6m   H – 3.7m   W – 2.4m

Note: For 40' Wide Load Trailer transportation will be a Night Load 1:00-5:00am  
For 40' Standard Trailer transportation can travel during the day except 6:00am – 8:30am, 13:00-15:00, 17:30-20:00  
\* All abluion units have built in septic tanks but additional external water tank is required.

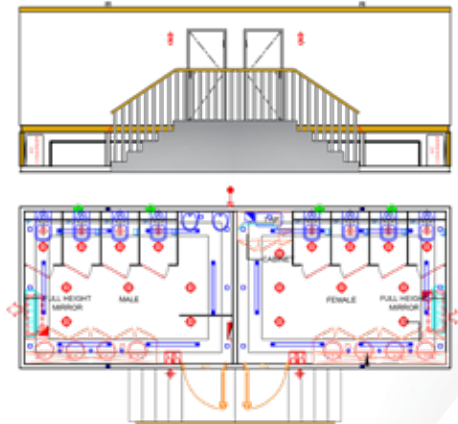


# Sanitation

32' VIP



Specifications*	
AC's	Included
Lighting	Included Twin Tube Lights
Power Requirements	32Amp 1 Phase
Keys - Security	Lockable – One set issued
Flooring	Vinyl
Transportation Mode	40' Wide Load Trailer
Offloading Requirement	50 Ton Crane
Weight	12 Ton (empty)
Measurement	L – 9.75m   H – 3.8m   W – 3.6m



Note: For 40' Wide Load Trailer transportation will be a Night Load 1:00-5:00am  
For 40' Standard Trailer transportation can travel during the day except 6:00am – 8:30am, 13:00-15:00, 17:30-20:00  
\* All ablution units have built in septic tanks but additional external water tank is required.



## VIP Sanitation



Flat Pack Flexiloo



Flat Pack Flexiloo WC

Specifications*		
WC	Folded	Assembled
Width	0.9m	0.9m
Depth	0.69m	1.8m
Height	2.26m	2.2m
Weight		190kg (approx depending on model)
Standard Toilet Fitted		Jets 59M FD/VPC-V
Water Consumption (per flush)		0.8 litres (adjustable)
Lighting		1 x 13W fluorescent
Power Connection		16Amp 1 Phase

Flat Pack Flexiloo Urinal

Specifications*		
Urinal Unit	Folded	Assembled
Width	0.655m	1.8m
Depth	0.925m	0.9m
Height	2.24m	2.2m
Weight		174kg (approx depending on model)
No. of urinals		3
Lighting		1 x 13W fluorescent
Power Connection		16Amp 1 Phase

Flat Pack Flexiloo Vanity

Specifications*	
Vanity Unit	Assembled
Width	0.9m
Depth	0.6m
Height	2.2m
Weight	70kg slave & 85kg master (approx. depending on model) 2 x 50W halogen
Lighting	16Amp 1 Phase
Power Connection	Automatic infra red tap (depending on model)
Satellite Units	

Additional external septic and water tank required

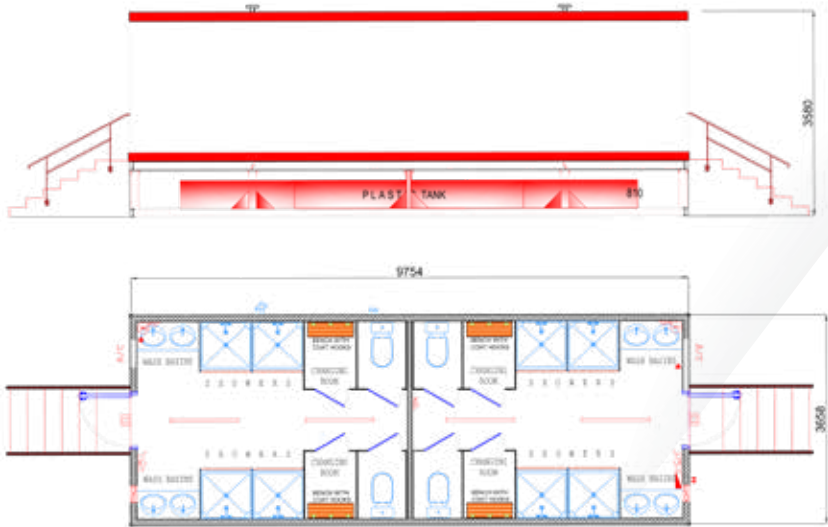
Note: For 40' Wide Load Trailer transportation will be a Night Load 1:00-5:00am  
For 40' Standard Trailer transportation can travel during the day except 6:00am – 8:30am, 13:00-15:00, 17:30-20:00  
\* All ablution units have built in septic tanks but additional external water tank is required.

# Sanitation

32' Shower Unit



Specifications*	
AC's	Included
Lighting	Included Twin Tube Lights and Spot Lights
Power Requirements	32Amp 1 Phase
Keys - Security	Lockable – One set issued
Flooring	Vinyl
Transportation Mode	40' Wide Load Trailer
Offloading Requirement	50 Ton Crane
Weight	11 Ton (empty)
Measurement	L – 9.7m   H – 3.58m   W – 3.65m



Note: For 40' Wide Load Trailer transportation will be a Night Load 1:00-5:00am  
For 40' Standard Trailer transportation can travel during the day except 6:00am – 8:30am, 13:00-15:00, 17:30-20:00  
\* All ablution units have built in septic tanks but additional external water tank is required.

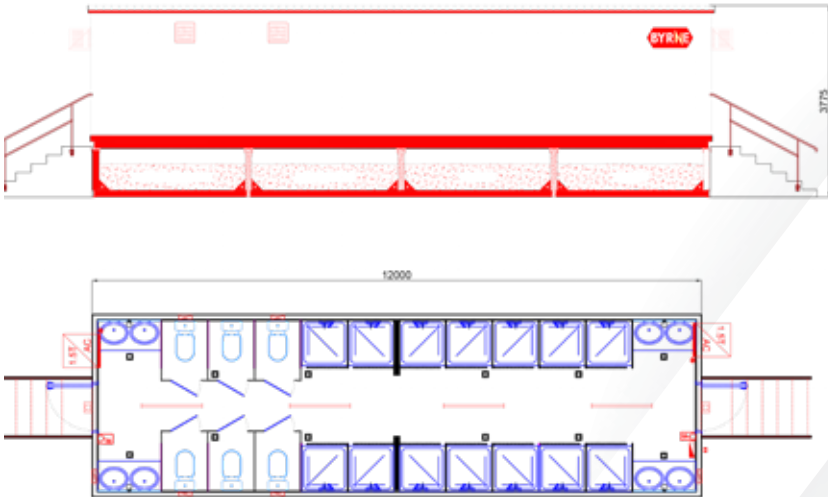
## Showers



40' Shower Unit



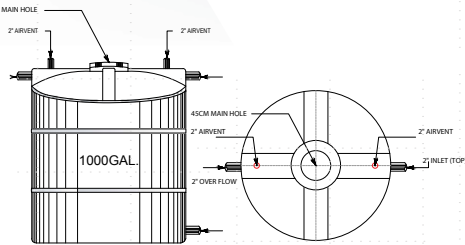
Specifications*	
AC's	Included
Lighting	Included Twin Tube Lights and Spot Lights
Power Requirements	32Amp 1 Phase
Keys - Security	Lockable – One set issued
Flooring	Vinyl
Transportation Mode	40' Wide Load Trailer
Offloading Requirement	50 Ton Crane
Weight	11 Ton (empty)
Measurement	L – 12m   H – 3.75m   W – 3.66m



Note: For 40' Wide Load Trailer transportation will be a Night Load 1:00-5:00am  
For 40' Standard Trailer transportation can travel during the day except 6:00am – 8:30am, 13:00-15:00, 17:30-20:00  
\* All ablution units have built in septic tanks but additional external water tank is required.

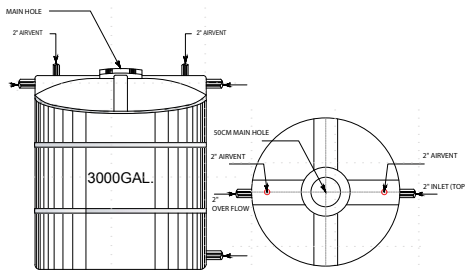


1000 Gallon Water Tank



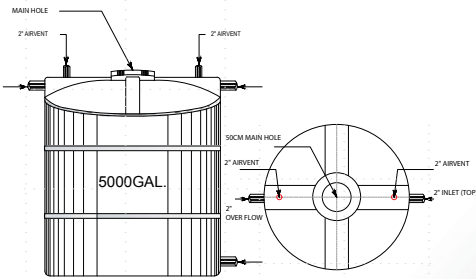
Specifications	
1000 Gallons	4,500 Ltrs
Radius / Diameter	1.68M
Height	1.88M
Bal Valve Size	2 Inches
Weight	100kg (Empty)
Transport	40' Trailer = 6 nos.
Offloading	Forklift or Crane

3000 Gallon Water Tank



Specifications	
3000 Gallons	13,638 Ltrs
Radius / Diameter	2.38M
Height	2.7M
Bal Valve Size	2 Inches
Weight	300kg (Empty)
Transport	40' Trailer = 4 nos.
Offloading	Forklift or Crane

5000 Gallon Water Tank



Specifications	
5000 Gallons	22,730 Ltrs
Radius / Diameter	2.88M
Height	3.1M
Bal Valve Size	2 Inches
Weight	500kg (Empty)
Transport	40' Trailer = 4 nos.
Offloading	Forklift or Crane

Note: Not to be loaded if not 100% empty

Septic Tanks



Available:  
500, 1000,  
3000, 5000  
(gallons)

Specifications	
Length	2m x 2m
Width	2m x 2m
Height	50cm
Valve Size	3 Inches
Weight	40kg (Empty)
Transport	40' Trailer = 6 nos.
Offloading	Forklift





## Plumbing Solutions



Single Tub Sink



Specifications	
Width	70cm
Length	120cm
Height	90cm
Diameter	30cm (50x50)
Materials	Stainless

Double Tub Sink



Specifications	
Width	60cm
Length	150cm
Height	90cm
Diameter	30cm (50x50)
Materials	Stainless

Hose



Specifications	
Rubber Hose	1 Inch
Rubber Hose	3/4 Inch
Green Flexi Hose	1 1/4 inch
Green Flexi Hose	3 inch

3 in 1 pump



Specifications	
Discharge Pipework	50 mm
Product Weight	33kg
Voltage	220-240 V/30Hz
Tank Volume	45L

Water Pump



Specifications	
1 Inch – from Tank to Pump	
3/4 inch – from Pump to Sink	
Power required: 16A 1 Phase	

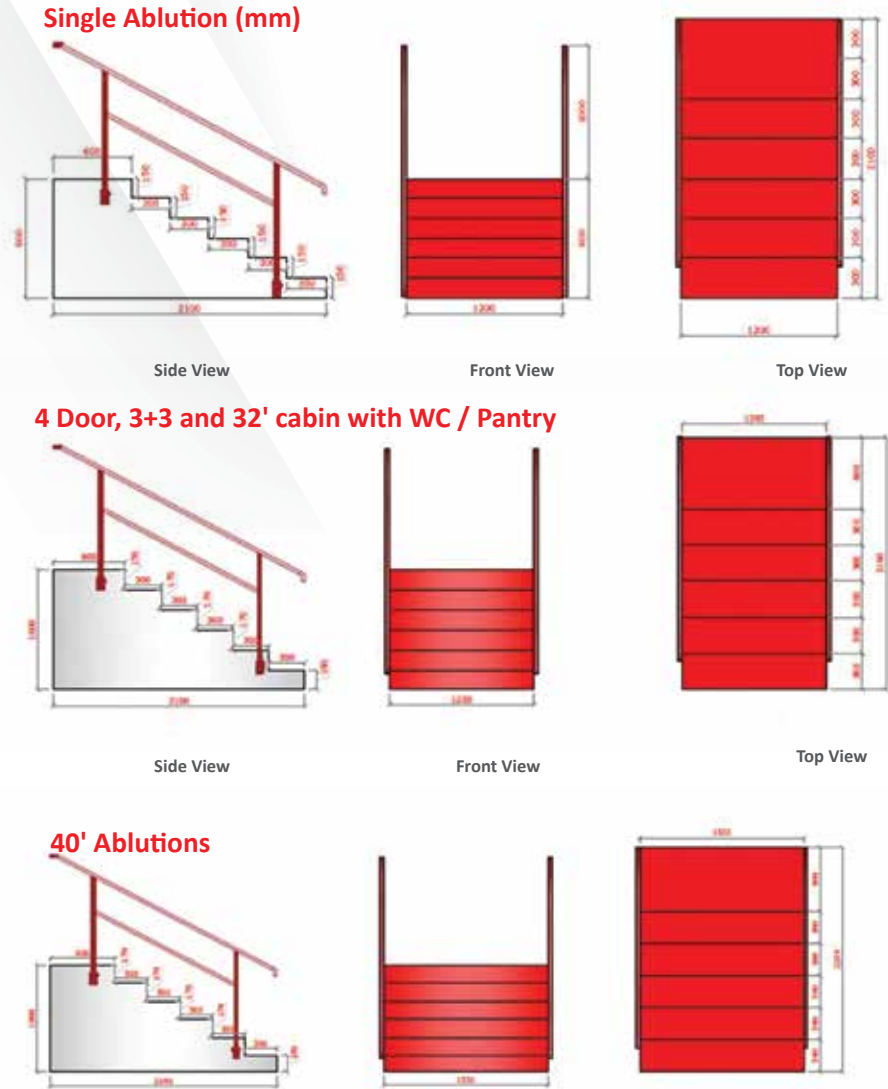
Robin Pump (for sucking waste water)



Specifications	
15m maximum to pump	
3 inches –Green Hose (suck)	
Power required: N/A	

Note: For 40' Wide Load Trailer transportation will be a Night Load 1:00-5:00am  
For 40' Standard Trailer transportation can travel during the day except 6:00am – 8:30am, 13:00-15:00, 17:30-20:00

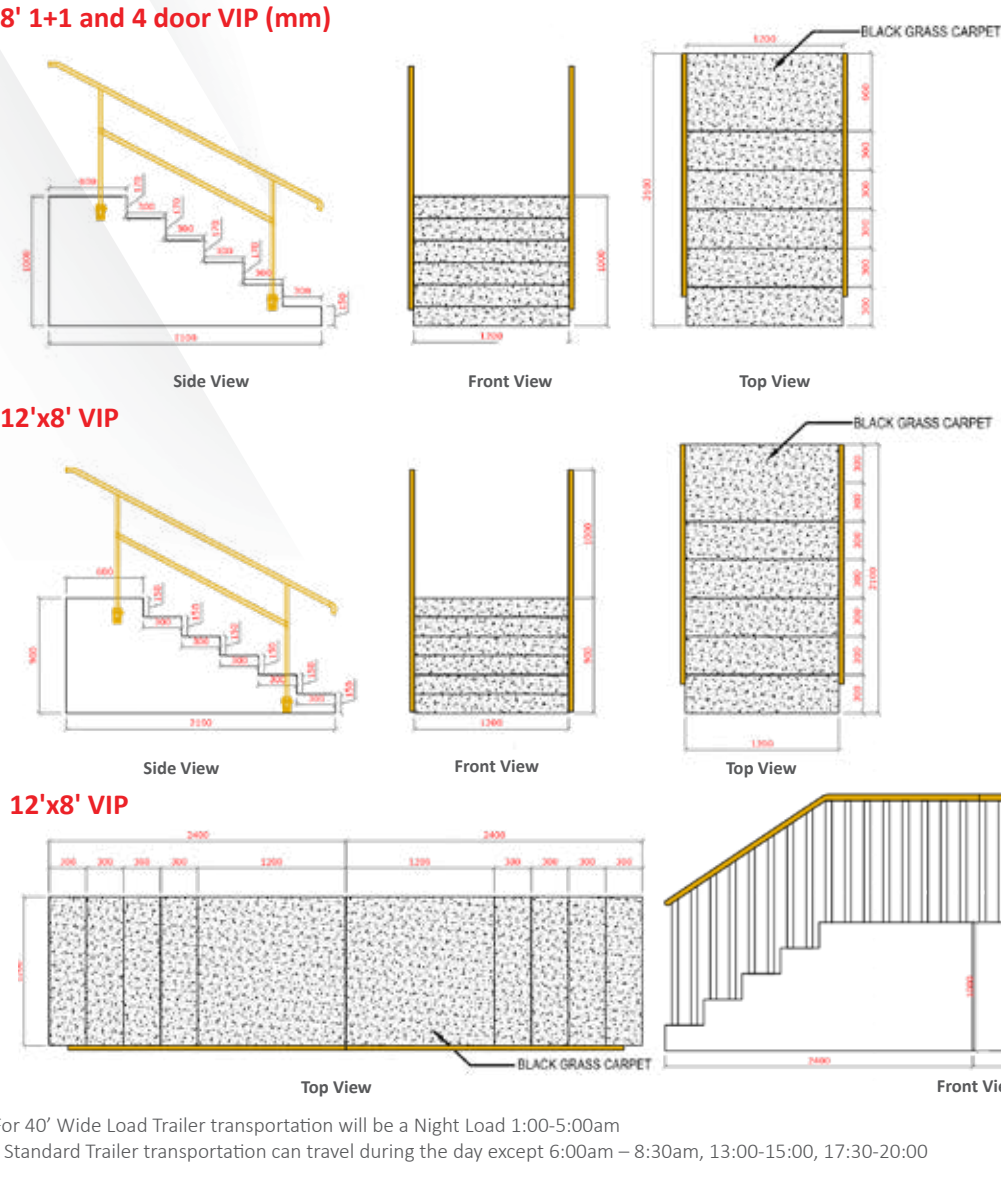
# Sanitation



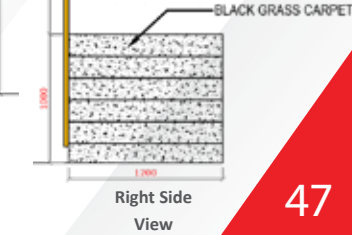
Note: For 40' Wide Load Trailer transportation will be a Night Load 1:00-5:00am  
For 40' Standard Trailer transportation can travel during the day except 6:00am – 8:30am, 13:00-15:00, 17:30-20:00



## Steps



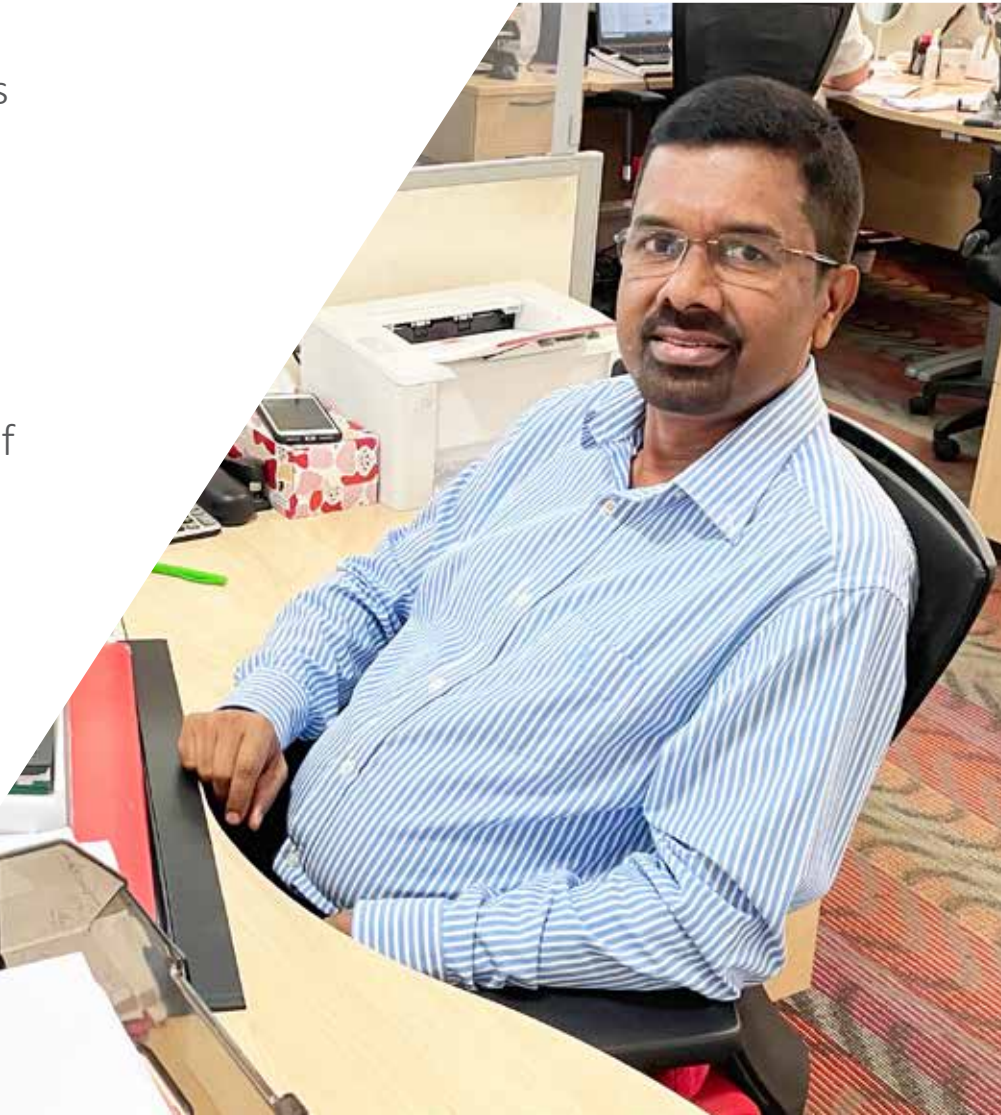
Note: For 40' Wide Load Trailer transportation will be a Night Load 1:00-5:00am  
For 40' Standard Trailer transportation can travel during the day except 6:00am – 8:30am, 13:00-15:00, 17:30-20:00



Right Side View

“ As Hire Desk Supervisor, my priority is ensuring our clients requirements are met at all times during the events process. It is important to keep on top of this as they can change at any time due to the fast paced nature of the events industry. I pride myself on always meeting customer expectations in line with Byrne’s industry leading standards.

Joseph Gama  
Hire Desk Supervisor ”

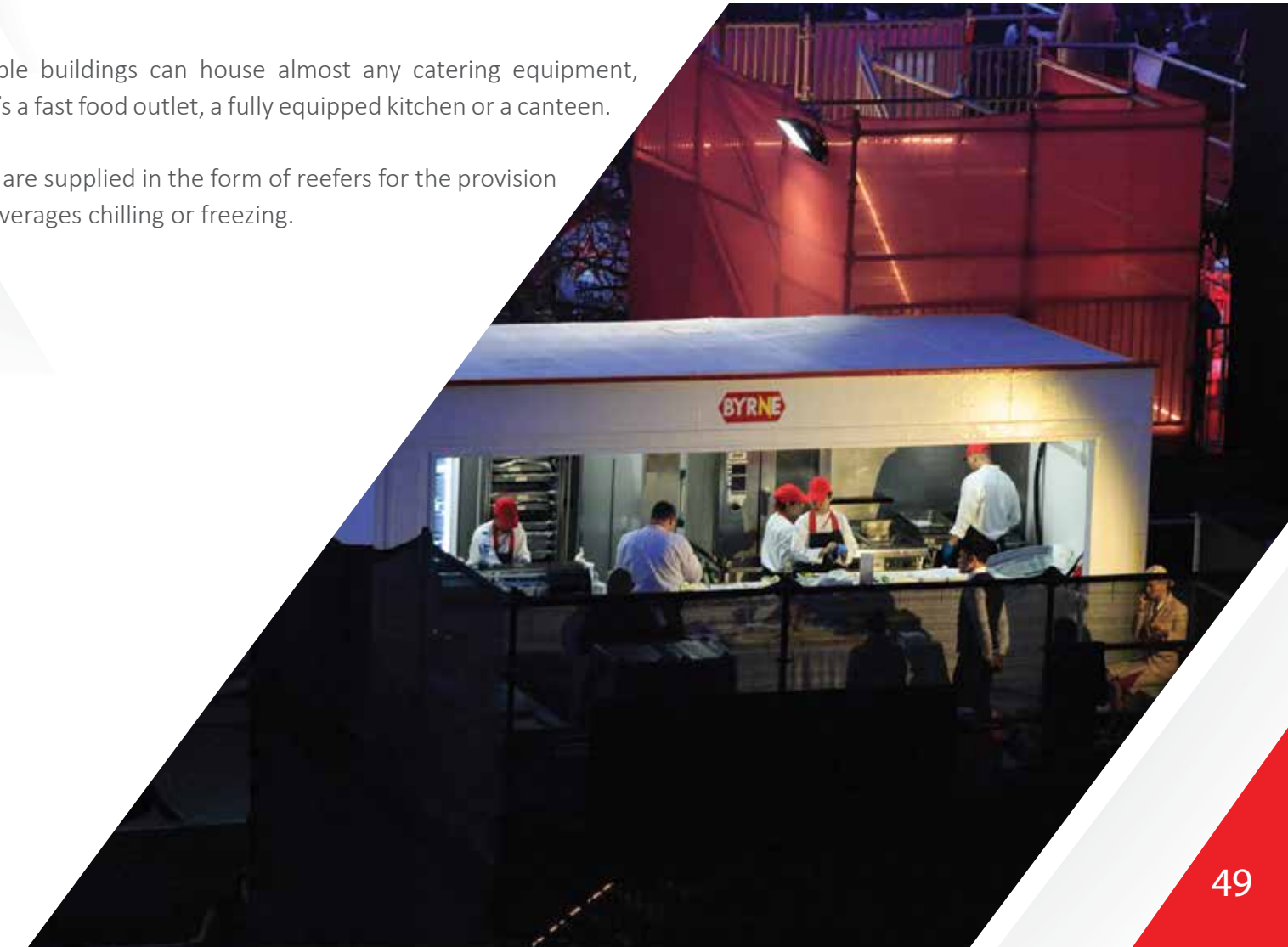


## Catering Facilities



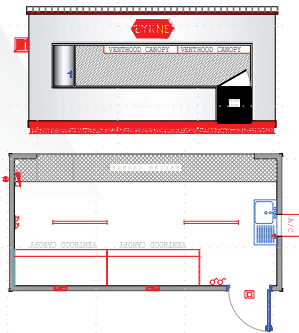
Our portable buildings can house almost any catering equipment, whether it’s a fast food outlet, a fully equipped kitchen or a canteen.

Chillers and freezers are supplied in the form of reefers for the provision of mass food and beverages chilling or freezing.



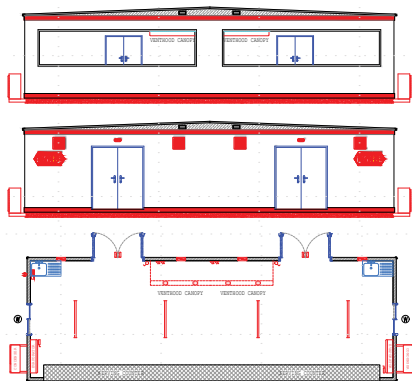
# Catering Facilities

20' Fast Food Outlet



Specifications	
AC's	Included
Lighting	Included Twin Tube Lights
Power Requirements	32Amp 3 Phase
Keys - Security	Lockable – One set issued
Flooring	Vinyl
Transportation Mode	40' Wide Load Trailer
Offloading Requirement	25 Ton Crane
Weight	3.5 Ton
Measurement	L – 6m   H – 3m   W – 3m

40' Fast Food Outlet



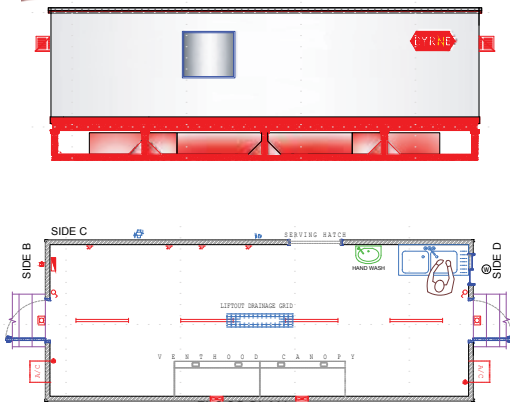
Specifications	
AC's	Included
Lighting	Included Twin Tube Lights
Power Requirements	32Amp 3 Phase
Keys - Security	Lockable – One set issued
Flooring	Vinyl
Transportation Mode	40' Wide Load Trailer
Offloading Requirement	25 Ton Crane
Weight	6-8 Ton
Measurement	L – 12m   H – 3.1m   W – 4m

Note: For 40' Wide Load Trailer transportation will be a Night Load 1:00-5:00am  
For 40' Standard Trailer transportation can travel during the day except 6:00am – 8:30am, 13:00-15:00, 17:30-20:00



# Kitchens

32' Kitchen Unit



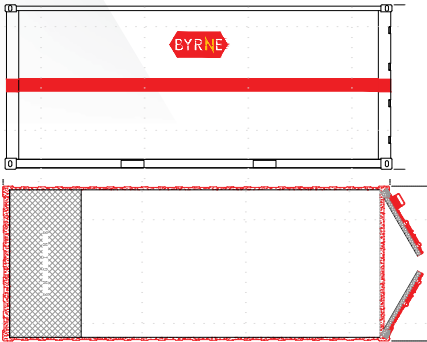
Specifications	
AC's	Included
Lighting	Included Twin Tube Lights
Power Requirements	125Amp 3 Phase
Keys - Security	Lockable – One set issued
Flooring	Vinyl
Transportation Mode	40' Wide Load Trailer
Offloading Requirement	50 Ton Crane
Weight	12 Ton
Measurement	L – 10m   H – 3.75m   W – 3.66m

Water tank  
required  
separatley

Note: For 40' Wide Load Trailer transportation will be a Night Load 1:00-5:00am  
For 40' Standard Trailer transportation can travel during the day except 6:00am – 8:30am, 13:00-15:00, 17:30-20:00

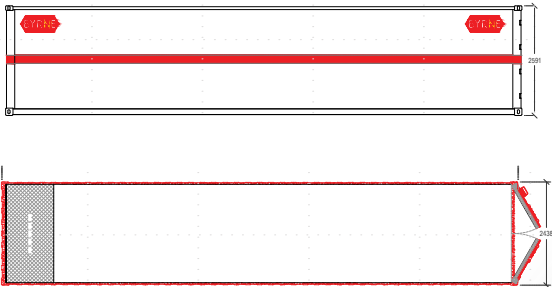
# Catering Facilities

20' Reefer



Specifications	
Power Requirements	32Amp 3 Phase
Keys - Security	Lockable
Transportation Mode	40' Standard Trailer
Offloading Requirement	25 Ton Crane (Empty)
Weight	3 Ton (Empty)
Measurement	L – 6m   H – 2.59m   W – 2.4m

40' Reefer



Specifications	
Power Requirements	32Amp 3 Phase
Keys - Security	Lockable
Transportation Mode	40' Standard Trailer
Offloading Requirement	25 Ton Crane (Empty)
Weight	5 Ton (Empty)
Measurement	L – 12m   H – 2.59m   W – 2.4m

Note: For 40' Wide Load Trailer transportation will be a Night Load 1:00-5:00am  
For 40' Standard Trailer transportation can travel during the day except 6:00am – 8:30am, 13:00-15:00, 17:30-20:00



“ My role is to carry out all pre delivery technical inspections on our generators, ensuring that the machine is fit for purpose with mechanical & electrical aspects thoroughly checked ready for your event. ”

Ferdinand Ledesma  
Mechanic



## Power Generation



Complete power packages can be supplied including power generation, secondary power distribution, transformers, bundled fuel tanks, drip trays and cables along with ramps and cable mats.

Our in-house technical team can provide a pre-hire advisory service to ensure your requirement is carefully specified with an appropriate fuel management plan.

The plug-and-play systems for our power supply and distribution complement our synchronised generators and allow for a fail safe and uninterrupted power supply, ideal for concerts.



20kVA



Specifications	
Amps	Load 100% - 29A per phase   Recommended Load 75% - 22A per phase
Fuel Consumption	Load 25% - 1.6 L/H   50% - 3.2 L/H   75% - 4.8 L/H
Belly Tank Capacity	85L
Offloading	3 Ton Hiab or 3 Ton Forklift +
Weight	1 Ton
Measurement	L – 2.1m   H – 1.4m   W – 1m

30kVA



Specifications	
Amps	Load 100% - 43A per phase   Recommended Load 75% - 32A per phase
Fuel Consumption	Load 25% - 2.4 L/H   50% - 4.8 L/H   75% - 7.2 L/H
Belly Tank Capacity	87L
Offloading	3 Ton Hiab or 3 Ton Forklift +
Weight	1.3 Ton
Measurement	L – 2.1m   H – 1.6m   W – 0.8m

Note: For 40’ Wide Load Trailer transportation will be a Night Load 1:00-5:00am  
For 40’ Standard Trailer transportation can travel during the day except 6:00am – 8:30am, 13:00-15:00, 17:30-20:00

80kVA



Specifications	
Amps	Load 100% - 115 per phase   Recommended Load 75% - 86A per phase
Fuel Consumption	Load 25% - 5.6 L/H   50% - 11.5 L/H   75% - 17.5 L/H
Belly Tank Capacity	109L
Offloading	3 Ton Hiab or 3 Ton Forklift +
Weight	1.5 Ton
Measurement	L – 2.5m   H – 1.7m   W – 1.1m

Note: For 40’ Wide Load Trailer transportation will be a Night Load 1:00-5:00am  
For 40’ Standard Trailer transportation can travel during the day except 6:00am – 8:30am, 13:00-15:00, 17:30-20:00

100kVA



Specifications	
Amps	Load 100% - 144A per phase   Recommended 75% Load - 108A per phase
Fuel Consumption	Load 25% - 7.2 L/H   50% - 14.4 L/H   75% - 21.6 L/H
Belly Tank Capacity	165L
Offloading	7 Ton Hiab or 3 Ton Forklift +
Weight	2 Ton
Measurement	L – 2.8m   H – 1.5m   W – 1.1m

200kVA



Smallest generator we can synchronise

250kVA



Specifications	
Amps	Load 100% - 289A per phase   Recommended Load 75% - 216A per phase
Fuel Consumption	Load 25% - 11.8 L/H   50% - 23.6 L/H   75% - 35.4 L/H
Belly Tank Capacity	340L
Offloading	7 Ton Hiab or 25 Ton Crane
Weight	3.5 Ton
Measurement	L – 4.3m   H – 1.9m   W – 1.3m

Specifications	
Amps	Load 100% - 288A per phase   Recommended Load 75% - 216A per phase
Fuel Consumption	Load 25% - 14.5 L/H   50% - 29 L/H   75% - 43.5 L/H
Belly Tank Capacity	950L
Offloading	25 Ton Crane
Weight	4 Ton
Measurement	L – 5m   H – 2.8m   W – 1.9m

Synchronisation

Synchronisation is the process of matching the speed and frequency of a generator or other source to a running network. An AC generator cannot deliver power to an electrical grid unless it is running at the same frequency as the network.

Load sharing is defined as the proportional division of the kW and kVAR total load between multiple generator sets in a paralleled system. Load sharing is essential to avoid overloading and stability problems on the systems generator sets. In case of 1 generator failure this mode will prevent loss of power.

A standby generator is a back-up electrical system that operates automatically. Within seconds of a utility outage an automatic transfer switch senses the power loss, commands the generator to start and then transfers the electrical load to the generator. The standby generator begins supplying power to the circuits.



Note: For 40’ Wide Load Trailer transportation will be a Night Load 1:00-5:00am  
For 40’ Standard Trailer transportation can travel during the day except 6:00am – 8:30am, 13:00-15:00, 17:30-20:00



500kVA



Specifications	
Amps	Load 100% - 722A per phase   Recommended Load 75% - 541A per phase
Fuel Consumption	Load 25% - 28 L/H   50% - 56 L/H   75% - 84 L/H
Belly Tank Capacity	1200L
Transport	40' Standard Trailer
Offloading	50 Ton Crane
Weight	9.5 Ton
Measurement	L – 6m   H – 3m   W – 2m

Note: For 40’ Wide Load Trailer transportation will be a Night Load 1:00-5:00am  
For 40’ Standard Trailer transportation can travel during the day except 6:00am – 8:30am, 13:00-15:00, 17:30-20:00

650kVA



Specifications	
Amps	Load 100% - 938A per phase   Recommended Load 75% - 704A per phase
Fuel Consumption	Load 25% - 36.4 L/H   50% - 72.8 L/H   75% - 109.2 L/H
Belly Tank Capacity	1200L
Transport	40' Standard Trailer
Offloading	50 Ton Crane
Weight	9.5 Ton
Measurement 1	L – 6m   H – 2.6m   W – 2m

800kVA



Specifications	
Amps	Load 100% - 1155A per phase   Recommended Load 75% - 866A per phase
Fuel Consumption	Load 25% - 44.8 L/H   50% - 89.6 L/H   75% - 134.4 L/H
Belly Tank Capacity	600L
Transport	40' Standard Trailer
Offloading	50 Ton Crane
Weight	13.5 Ton
Measurement 1	L – 6.1m   H – 2.7m   W – 2.4m
Measurement 2	L – 6m   H – 2.6m   W – 2.4m

1100kVA



Specifications	
Amps	Load 100% - 1588A per phase   Recommended Load 75% - 1191A per phase
Fuel Consumption	Load 25% - 61.6 L/H   50% - 123.2 L/H   75% - 184.8 L/H
Belly Tank Capacity	600L
Transport	40' Standard Trailer
Offloading	50 Ton Crane
Weight	15 Ton
Measurement 1	L – 6m   H – 2.9m   W – 2.5m
Measurement 2	L – 9.6m   H – 2.9m   W – 2.4m

Note: For 40' Wide Load Trailer transportation will be a Night Load 1:00-5:00am  
For 40' Standard Trailer transportation can travel during the day except 6:00am – 8:30am, 13:00-15:00, 17:30-20:00

1250kVA



Specifications	
Amps	Load 100% - 1804A per phase   Recommended Load 75% - 1353A per phase
Fuel Consumption	Load 25% - 70 L/H   50% - 140 L/H   75% - 210 L/H
Belly Tank Capacity	1050L
Transport	40' Standard Trailer
Offloading	70 Ton Crane
Weight	16 Ton
Measurement 1	L – 8.1m   H – 2.6m   W – 2.4m
Measurement 2	L – 6m   H – 2.9m   W – 2.4m

Note: For 40' Wide Load Trailer transportation will be a Night Load 1:00-5:00am  
For 40' Standard Trailer transportation can travel during the day except 6:00am – 8:30am, 13:00-15:00, 17:30-20:00

1650kVA



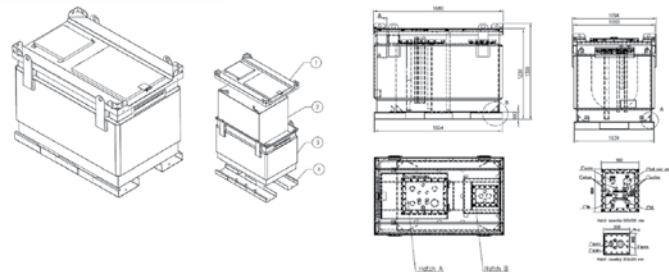
Specifications	
Amps	Load 100% - 2381A per phase   Recommended Load 75% - 1786A per phase
Fuel Consumption	Load 25% - 92.4 L/H   50% - 184.8 L/H   75% - 277.2 L/H
Belly Tank Capacity	1800L
Transport	40' Standard Trailer
Offloading	70 Ton Crane
Weight	24 Ton
Measurement 1	L – 12.2m   H – 3.8m   W – 2.4m
Measurement 2	L – 12.2m   H – 2.9m   W – 2.4m

Loadbanks

A full range of loadbanks – contained and organised with a fully controllable electrical resistive load. Rental loadbanks are available in a range of sizes up to 2500 KW @ 480 Volts, 50 and 60 HZ.

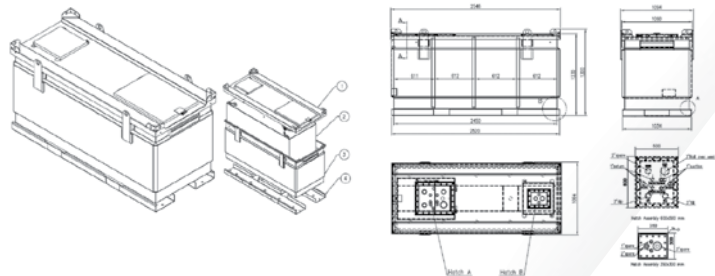


200 Gallon



Specifications	
200 gallon	909 Liter = 909 kg
Measurement	L – 1680cm   W – 1094cm   H – 1300cm
Weight (Empty)	678 kg
Weight (Full)	1587 kg
Bunded	Yes

400 Gallon

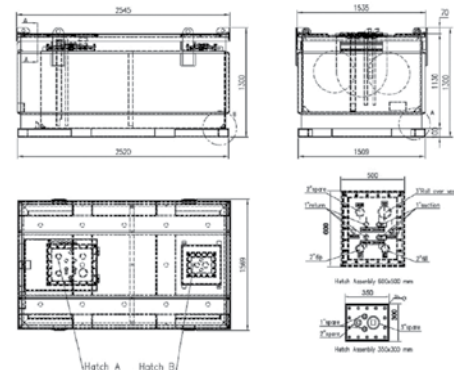


Specifications	
400 gallon	1818 Liter = 1818 kg
Measurement	L – 2546cm   W – 1094cm   H – 1300cm
Weight (Empty)	988 kg
Weight (Full)	2806 kg
Bunded	Yes

Note: For 40' Wide Load Trailer transportation will be a Night Load 1:00-5:00am  
For 40' Standard Trailer transportation can travel during the day except 6:00am – 8:30am, 13:00-15:00, 17:30-20:00



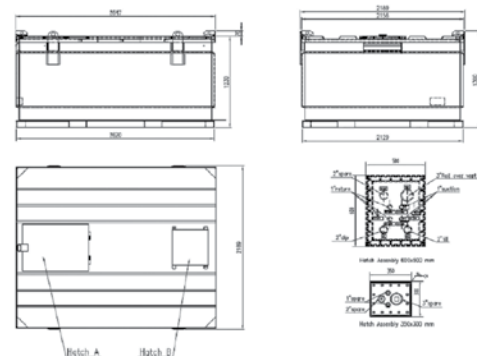
800 Gallon



Specifications	
800 gallon	3636 Liter = 3636 kg
Measurement	L – 2545cm   W – 1569cm   H – 1300cm
Weight (Empty)	1190 kg
Weight (Full)	4826 kg
Bunded	Yes

Note: For 40' Wide Load Trailer transportation will be a Night Load 1:00-5:00am  
For 40' Standard Trailer transportation can travel during the day except 6:00am – 8:30am, 13:00-15:00, 17:30-20:00

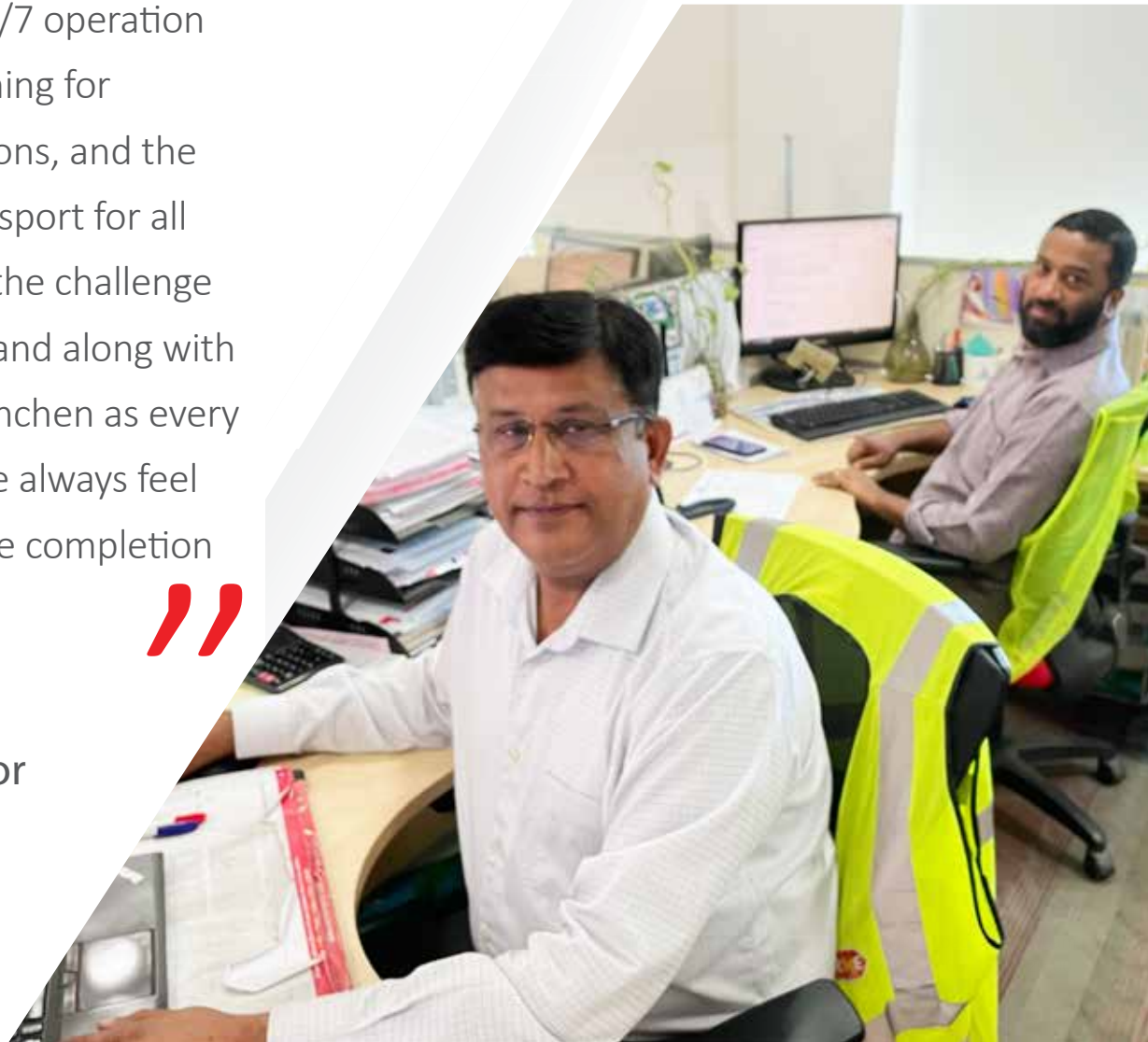
1000 Gallon



Specifications	
1000 gallon	4546 Liter = 4546 kg
Length	L – 2647cm   W – 2189cm   H – 1300cm
Weight (Empty)	1680 kg
Weight (Full)	6226 kg
Bunded	Yes

“ I am a Transport Supervisor,  
responsible for the 24/7 operation  
and the logistics planning for  
deliveries and collections, and the  
scheduling of the transport for all  
major events. I enjoy the challenge  
of managing the demand along with  
my colleague Shaji Punchen as every  
day is different and we always feel  
accomplished after the completion  
of a successful event. ”

Nagarajan Gouri  
Transport Supervisor



32Amp 3Phase Capacity



32Amp 3Phase Capacity



63Amp 3Phase Capacity



63Amp 3Phase Capacity



63Amp 3Phase Capacity



125Amp 3Phase Capacity



Specifications	
Incoming	Outgoing
32Amp 3Phase	3 x 32A 1Phase
	3 x 16A 1Phase

Specifications	
Incoming	Outgoing
32Amp 3Phase	1 x 32A 3Phase
	9 x 16A 1Phase

Specifications	
Incoming	Outgoing
63Amp 3Phase	1 x 63A 3Phase
	6 x 32A 1Phase
	12 x 16A 1Phase

Specifications	
Incoming	Outgoing
63Amp 3Phase	1 x 63A 3Phase
	4 x 32A 3Phase

Specifications	
Incoming	Outgoing
63Amp 3Phase	1 x 63A 3Phase
	6 x 32A 1Phase
	6 x 16A 1Phase

Specifications	
Incoming	Outgoing
125Amp 3Phase	2 x 63A 3Phase
	2 x 32A 3Phase
	3 x 32A 1Phase
	9 x 16A 1Phase

Note: For 40' Wide Load Trailer transportation will be a Night Load 1:00-5:00am  
For 40' Standard Trailer transportation can travel during the day except 6:00am – 8:30am, 13:00-15:00, 17:30-20:00

Note: For 40' Wide Load Trailer transportation will be a Night Load 1:00-5:00am  
For 40' Standard Trailer transportation can travel during the day except 6:00am – 8:30am, 13:00-15:00, 17:30-20:00

125Amp 3Phase Capacity



125Amp 3Phase Capacity



400Amp 3Phase Capacity



Specifications	
Incoming	Outgoing
125Amp 3Phase	1 x 63A 3Phase
	2 x 32A 3Phase
	12 x 32A 1Phase
	6 x 16A 1Phase

Specifications	
Incoming	Outgoing
125Amp 3Phase	6 x 32A 3Phase

Specifications	
Incoming	Outgoing
400A Powerlock DB to accommodate 240mm <sup>2</sup> /120mm <sup>2</sup> incoming cable connectors	6 x 63A 3Phase

Note: For 40' Wide Load Trailer transportation will be a Night Load 1:00-5:00am  
For 40' Standard Trailer transportation can travel during the day except 6:00am – 8:30am, 13:00-15:00, 17:30-20:00



400Amp 3Phase Capacity



Specifications	
Incoming	Outgoing
400A 3PH Powerlock DB to accomodate 120mm <sup>2</sup> cabled incoming connectors	1 x 125A 3Phase
	2 x 63A 3Phase
	2 x 32A 3Phase

Note: For 40' Wide Load Trailer transportation will be a Night Load 1:00-5:00am  
For 40' Standard Trailer transportation can travel during the day except 6:00am – 8:30am, 13:00-15:00, 17:30-20:00

400Amp 3Phase Capacity



Specifications	
Incoming	Outgoing
400A 3PH Powerlock DB to accomodate 120mm <sup>2</sup> cabled incoming connectors	2 x 63A 3Phase
	4 x 32A 3Phase

500Amp 3Phase Capacity



Specifications	
Incoming	Outgoing
500A Powerlock DB to accommodate 240mm <sup>2</sup> /120mm <sup>2</sup> incoming cable connectors	Powerlock Set
	4 x 125A 3Phase

500Amp 3Phase Capacity



Specifications	
Incoming	Outgoing
500A Powerlock DB to accommodate 240mm² /120mm² incoming cable connectors	3 x 125A 3Phase
	3 x 63A 3Phase
	3 x 63A 1Phase
	3 x 32A 3Phase
	3 x 16A 1Phase
	Powerlock Set

800Amp 3Phase Capacity



Specifications	
Incoming	Outgoing
800A Powerlock DB to accommodate 240mm² /120mm² incoming cable connectors	3 x 125A 3Phase
	3 x 63A 3Phase
	3 x 63A 1Phase
	3 x 32A 3Phase
	3 x 16A 1Phase
	Powerlock Set

800Amp 3Phase Capacity



Specifications	
Incoming	Outgoing
800A Powerlock DB to accommodate 240mm² /120mm² incoming cable connectors	6 x 63Amp 3Phase



125Amp 3Phase Capacity



Specifications	
Incoming	Outgoing
125A 3Phase Capacity	2 x 63A 3PH

800Amp 3Phase Capacity



Specifications	
Incoming	Outgoing
800A Powerlock DB to accommodate 240mm² cable connector	1 x 400A Powerlock outlet
	4 x 125A 3PH
	2 x 63A 3PH

Note: For 40' Wide Load Trailer transportation will be a Night Load 1:00-5:00am  
For 40' Standard Trailer transportation can travel during the day except 6:00am – 8:30am, 13:00-15:00, 17:30-20:00

Note: For 40' Wide Load Trailer transportation will be a Night Load 1:00-5:00am  
For 40' Standard Trailer transportation can travel during the day except 6:00am – 8:30am, 13:00-15:00, 17:30-20:00



# Power Distribution



16Amp 1Phase Capacity



Specifications	
Incoming	Outgoing
16Amp 1Phase	1 x 16A 1Phase
	12 x 13A (BS1363) socket outlets

32Amp 1Phase Capacity



Specifications	
Incoming	Outgoing
32Amp 1Phase	1 x 32A 1Phase
	12 x 13A (BS1363) socket outlets

32Amp 1Phase Capacity



Specifications	
Incoming	Outgoing
32Amp 1Phase	4 x 16A 1Phase

32Amp 3Phase Capacity



Specifications	
Incoming	Outgoing
32Amp 3Phase	3 x 32Amp 1Phase

63Amp 3Phase Capacity



Specifications	
Incoming	Outgoing
63Amp 3Phase	2 x 32A 3Phase

Note: For 40' Wide Load Trailer transportation will be a Night Load 1:00-5:00am  
For 40' Standard Trailer transportation can travel during the day except 6:00am – 8:30am, 13:00-15:00, 17:30-20:00

240mm² Powerlock



Specifications	
Size of the cable (diameter)	240mm² Single core
Lengths of the cables available	15m, 25m, 50m

120mm² Powerlock



Specifications	
Size of the cable (diameter)	120mm² Single core
Lengths of the cables available	15m, 25m, 50m

125Amp 3Phase



Specifications	
Size of the cable (diameter)	35mm² 5 core
Lengths of the cables available	15m, 25m, 50m

63Amp 3Phase



Specifications	
Size of the cable (diameter)	16mm² 5 core
Lengths of the cables available	15m, 25m, 50m

32Amp 3Phase



Specifications	
Size of the cable (diameter)	10mm² 5 core
Lengths of the cables available	15m, 25m, 50m

32Amp 1Phase



Specifications	
Size of the cable (diameter)	6mm² - 10mm² 3 core
Lengths of the cables available	15m, 25m, 50m



Cables and Accessories

16 Amp 1ø



Specifications	
Size of the cable (diameter)	2.5mm² 3 core
Lengths of the cables available	5m, 10m, 15m, 25m, 50m

"Double" Sockets



Specifications	
16A 1Phase to 2 x 13A 3PIN	Household Socket

"4 Way" Sockets



Specifications	
16A 1Phase to 4 x 13A 3PIN	Household Socket

Transformers



Specifications	
Various Sizes	Available

Cable Ramps



Specifications	
Cable Protection	1m, 5 channel

Note: For 40' Wide Load Trailer transportation will be a Night Load 1:00-5:00am  
For 40' Standard Trailer transportation can travel during the day except 6:00am – 8:30am, 13:00-15:00, 17:30-20:00

Note: For 40' Wide Load Trailer transportation will be a Night Load 1:00-5:00am  
For 40' Standard Trailer transportation can travel during the day except 6:00am – 8:30am, 13:00-15:00, 17:30-20:00

“ As Byrne’s Technical Supervisor, I am responsible for receiving and managing the enquiries. I prepare and organize the kit that is required for site, in line with each enquiry, ensuring it’s safe and ready for use. I also monitor the team who are assigned to each event and ensure all requirements of each individual enquiry is met. ”

Serin Sasidharan  
Technical Supervisor



## Hoist & Access



We supply a full range of access solutions for people and materials to support your site requirements. Our range includes scissor lifts (both electric and diesel), as well as telescopic, articulated and electric booms.

Supporting our access range is a suite of low level access products with working heights of up to 5.1m, ideal for cleaning and painting works, interior fit-out.





Scissor Lifts

Scissor Lifts

Specifications	Working Height Metric / Ft	Platform Capacity Metric / Lbs
GSTM-3246	11.75m / 38ft	318kg / 700lbs
GSTM-1932	7.79 m / 25ft	227kg / 500lbs
GSTM-4047	13.89 m / 45ft	249 kg / 550 lbs
GSTM-4069 DC	14.3 m / 46ft 3 in	363 kg / 800 lbs
GSTM-4069 RT	14.3 m / 46ft	363 kg / 800 lbs
GSTM-4390 RT	15.11 m / 49ft	680 kg / 1,500 lbs
GSTM-5390 RT	18.15 m / 59ft	680 kg / 1,500 lbs
1932R	7.80 m / 25.5 ft	230 kg / 507 lbs
2646ES	9.92 m / 32.5 ft	450 kg / 992 lbs
10RS	11.75 m / 38.5 ft	320 kg / 705 lbs
4045R	13.96 m / 45.8 ft	350 kg / 770lbs
4069LE	14.19 m / 46.5 ft	360 kg / 790lbs
M4069	14.19 m / 46.5 ft	360 kg / 790lbs
430LRT	15.11 m / 49.5 ft	568 kg / 1252lbs
530LRT	18.15 m / 59.5 ft	680 kg / 1499lbs



Note: For 40’ Wide Load Trailer transportation will be a Night Load 1:00-5:00am  
For 40’ Standard Trailer transportation can travel during the day except 6:00am – 8:30am, 13:00-15:00, 17:30-20:00



Note: For 40' Wide Load Trailer transportation will be a Night Load 1:00-5:00am  
For 40' Standard Trailer transportation can travel during the day except 6:00am – 8:30am, 13:00-15:00, 17:30-20:00



Boom Lifts

Specifications	Working Height Metric / Ft	Platform Capacity Metric / Lbs
Z®-33/18	12 m / 38 ft 10 in	200 kg / 440 lb
Z®-51/30J RT	17.59 m / 57 ft 8 in	227 kg / 500 lbs
Z®-45/25J DC/Bi-Energy	15.94 m / 51 ft 9 in	227 kg / 500 lbs
Z®-45/25J RT	15.86 m / 51 ft 6 in	227 kg / 500 lbs
Z®-80/60	25.77 m / 84 ft	227 kg / 500 lbs
Z®-62/40	20.87 m / 67 ft 11 in	227 kg / 500 lbs
S®-65 XCTM	21.81 m / 71 ft	454 kg / 1,000 lb
S®-85 XCTM	27.91 m / 91 ft	454 kg / (1,000 lb)
E450AJ	15.72 m / 51 ft 6 in	230 kg / 507 lbs
450AJ	15.7 7 m 51 ft 7 in	250 kg / 551 lbs
520AJ	18 m / 59 ft 1 in	250 kg / 551 lbs
600AJ	20.46 m / 67 ft 1 in	230 kg / 507 lbs
800AJ	26.38 m / 86 ft 5 in	230 kg / 507 lbs
660SJ	22.02 m / 72 ft 2 in	250 kg / 551.2 lbs
1350SJP	43.3 m / 142 ft 1 in	450 kg / 992.1 lbs



Note: For 40' Wide Load Trailer transportation will be a Night Load 1:00-5:00am  
For 40' Standard Trailer transportation can travel during the day except 6:00am – 8:30am, 13:00-15:00, 17:30-20:00

# Hoist & Access



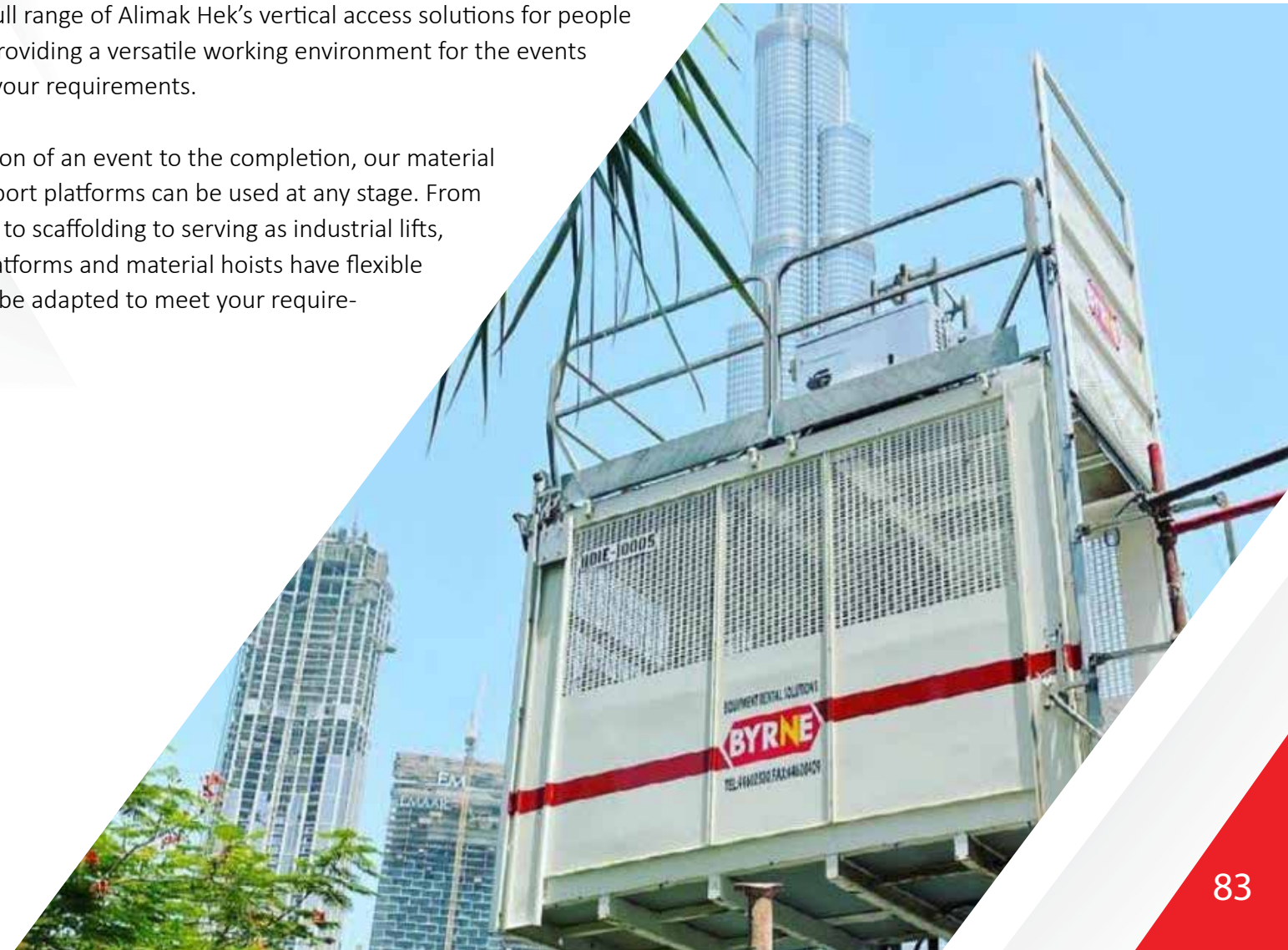
Note: For 40' Wide Load Trailer transportation will be a Night Load 1:00-5:00am  
For 40' Standard Trailer transportation can travel during the day except 6:00am – 8:30am, 13:00-15:00, 17:30-20:00



## Hoists

We supply the full range of Alimak Hek’s vertical access solutions for people and materials, providing a versatile working environment for the events industry to suit your requirements.

From the inception of an event to the completion, our material hoists and transport platforms can be used at any stage. From providing access to scaffolding to serving as industrial lifts, our transport platforms and material hoists have flexible designs and can be adapted to meet your requirements.



“

I work with the Management and Event Operations to ensure that event objectives are met by delivering a consistently high level of external and internal customer service in terms of quality of advice, workmanship, development and training.

The key objective of my role is to continuously raise the standards within the workplace and to ensure that BER equipment always meets the ever evolving event related demands.

”

Richie Avendano  
Production & Planning  
Supervisor



# Mobile Lighting



We offer a range of super silenced mobile lighting towers with vertical masts up to 9m height and with 4x1000W metal halide bulbs, ideal for providing light to any site.

Whether you need backstage lighting, your hospitality area lit or the event car parking facilities, we can provide a lighting solution to meet your needs.



# Mobile Lighting

400W Metal Halide



Specifications		
Light Bulb	IP Rating	Connector
400W	IP65	16A 1PH

500W Metal Halide



Specifications		
Light Bulb	IP Rating	Connector
500W	IP55	16A 1PH

1000W Metal Halide



Specifications		
Light Bulb	IP Rating	Connector
1000W	IP54	16A 1PH

Note: For 40’ Wide Load Trailer transportation will be a Night Load 1:00-5:00am  
For 40’ Standard Trailer transportation can travel during the day except 6:00am – 8:30am, 13:00-15:00, 17:30-20:00



## Mobile Lighting



Lighting Tower

Specifications
Vertical Masts up to 9m
4 x 1000W metal halide bulbs

Note: For 40’ Wide Load Trailer transportation will be a Night Load 1:00-5:00am  
For 40’ Standard Trailer transportation can travel during the day except 6:00am – 8:30am, 13:00-15:00, 17:30-20:00



LED Lighting Tower

Specifications
4 x 320W high efficiency LED floodlights
Running time 240 hours

# Climate Control

“ I am a Document Controller which means I provide Admin support for our operations and sales teams. Every day at Byrne is different for me; I organize accreditations for the install phase of our events, as well as for the event days and demob. I also provide support to the sales team for all of the PQQ and tender requirements.

”

Desiree Dinio  
Document Controller



Byrne Equipment Rental has a diverse fleet of equipment that ranges from small to large package AC units, as well as a full range of Chillers and Air Handlers.

We can design, install and maintain various AC solutions which are bespoke and customised to your event. Providing support all the way through the process which includes heat load & air-flow calculation, selecting the right equipment as per site conditions, installation & commissioning and project management.



Chillers & Air Handlers

For larger structures, Byrne has chillers (100TR – 400TR) and 200TR and Air Handlers (AHU's) to complement our AC range.



3TR / 11kW Split AC Unit



Specifications		
Type	Split AC Unit	
Size	3TR / 11kW	
BTU/h	36,000	
Air Flow	0.52m³/s	
Power Supply	220-240V / 1ph / 50Hz	
Rated Current (A)	15.91 - 18.93	
Unit	Indoor	Outdoor
Dimensions	0.55m (w) x 0.35m (d) x 1.8m (h)	0.95m (w) x 0.35m (d) x 1.8m (h)
Noise	55 dB(A)	59.1 dB(A)
Weight	64kg	70kg
Cooling Area	48m² - 70m²*	

Note: For 40' Wide Load Trailer transportation will be a Night Load 1:00-5:00am  
For 40' Standard Trailer transportation can travel during the day except 6:00am – 8:30am, 13:00-15:00, 17:30-20:00  
\* Due to high ambient temperatures in the GCC, please consult your local sales representative

5TR 18kW Split AC Unit



Specifications		
Type	Split AC Unit	
Size	5TR / 18kW	
BTU/h	60,000	
Air Flow	0.64m³/s	
Power Supply	380-415V / 3ph / 50Hz	
Rated Current (A)	8.66 - 11.59	
Unit	Indoor	Outdoor
Dimensions	0.61m (w) x 0.39m (d) x 1.93m (h)	1.03m (w) x 0.44m (d) x 1.31m (h)
Noise	59.5 dB (A)	63 dB (A)
Weight	79kg	110kg
Cooling Area	80m² - 117m²*	

Note: For 40' Wide Load Trailer transportation will be a Night Load 1:00-5:00am  
For 40' Standard Trailer transportation can travel during the day except 6:00am – 8:30am, 13:00-15:00, 17:30-20:00  
\* Due to high ambient temperatures in the GCC, please consult your local sales representative

10TR / 35kW Split AC Unit



Specifications		
Type	Split AC Unit	
Size	10TR / 35kW	
BTU/h	121,000	
Air Flow	1.68m³/s	
Power Supply	380-415V / 3ph / 50Hz	
Max Power Input (kW)	19.2	
Max Current (A)	32.5	
Unit	Indoor	Outdoor
Dimensions	1.2m (w) x 1.86m (d) x 0.42m (h)	1.26m (w) x 0.91m (d) x 0.7m (h)
Noise	65 dB (A)	69 dB (A)
Weight	174kg	215kg
Cooling Area	160m² - 234m²*	

5TR / 18kW Package AC Unit



7.5TR / 25kW Package AC Unit



Specifications	
Type	Package AC Unit
Size	5TR / 18kW
BTU/h	58,000
Air Flow	0.94m³/s
Power Supply	380-415V / 3ph / 50Hz
Max Power Input (kW)	7.4
Max Current (A)	15.5
Dimensions	1.35m (w) x 0.9m (d) x 1.34m (h)
Weight	186kg
Noise	Low noise level - compressors have built in mufflers
Cooling Area	TBC*

Specifications	
Type	Package AC Unit
Size	7.5TR / 25kW
BTU/h	89,000
Air Flow	0.79m³/s
Power Supply	380-415V / 3ph / 50Hz
Max Power Input (kW)	13.6
Max Current (A)	27.2
Dimensions	1.5m (w) x 0.87m (d) x 1.15m (h)
Weight	236kg
Noise	Low noise level - compressors have built in mufflers
Cooling Area	TBC*

Note: For 40' Wide Load Trailer transportation will be a Night Load 1:00-5:00am  
For 40' Standard Trailer transportation can travel during the day except 6:00am – 8:30am, 13:00-15:00, 17:30-20:00  
\* Due to high ambient temperatures in the GCC, please consult your local sales representative



## Package Units

15TR / 53kW Package AC Unit



Specifications	
Type	Package AC Unit
Size	15TR / 53kW
BTU/h	180,000
Air Flow	3.78m³/s
Power Supply	380-415V / 3ph / 50Hz
Max Power Input (kW)	25
Max Current (A)	48
Dimensions	1.97m (w) x 1.23m (d) x 1.13m (h)
Weight	490kg
Noise	Low noise level - compressors have built in mufflers
Cooling Area	TBC*

Note: For 40' Wide Load Trailer transportation will be a Night Load 1:00-5:00am  
For 40' Standard Trailer transportation can travel during the day except 6:00am – 8:30am, 13:00-15:00, 17:30-20:00  
\* Due to high ambient temperatures in the GCC, please consult your local sales representative

25TR / 88kW Package AC Unit



Specifications	
Type	Package AC Unit
Size	25TR / 88kW
BTU/h	300,000
Air Flow	4.72m³/s
Power Supply	380-415V / 3ph / 50Hz
Max Power Input (kW)	40.5
Max Current (A)	77.4
Dimensions	2.32m (w) x 1.25m (d) x 2.22m (h)
Weight	925kg
Noise	Low noise level - compressors have built in mufflers
Cooling Area	TBC*

“ My role involves the planning and allocation of equipment for the UAE. I ensure that each piece of equipment is safe for use and upholds the Byrne standard that we are known for in the industry. My role is pivotal during the busy periods and high season due to the fast paced, busy nature of the events industry as well as the other sectors we work in. ”

Baiju Katinchapalli  
Equipment Administrator



## Fencing and Barriers

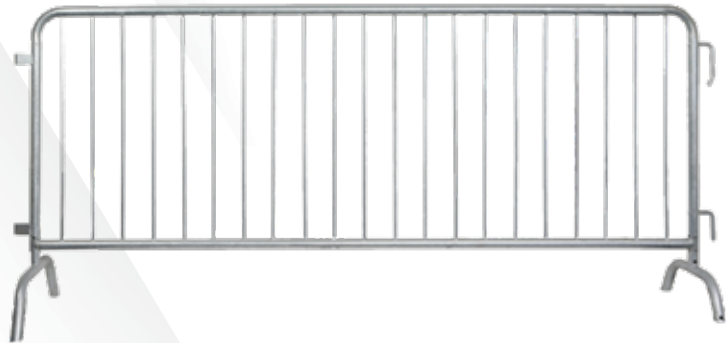


Whatever the occasion, we can cater for any fencing or barrier requirement, whether you need crowd control using police barriers, cones or barriers for road traffic control, mesh or heras fencing to section off areas, or garden style picket fencing we have it in our rental fleet.

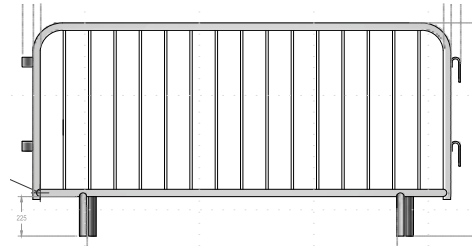


# Fencing and Barriers

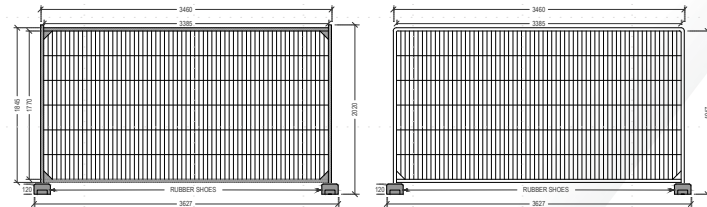
Police Barrier



Specifications	
Galvanised steel police barriers with a curved edge design. Each barrier measures 2m or 2.5m long with a height of 1.2m. These can be used for forming aque system/segregation at food and beverage areas, checkpoints, VIP entrances & main entrances of events of all types.	
Offloading Requirement	3 Ton Hiab or 3 Ton Forklift +



Heras Fencing



Specifications	
Offering over 4km of fencing, each fence measure 3.5m long with a height of 2m. Mostly used for perimeter fencing/segrega on.	
Offloading Requirement	3 Ton Hiab or 3 Ton Forklift +

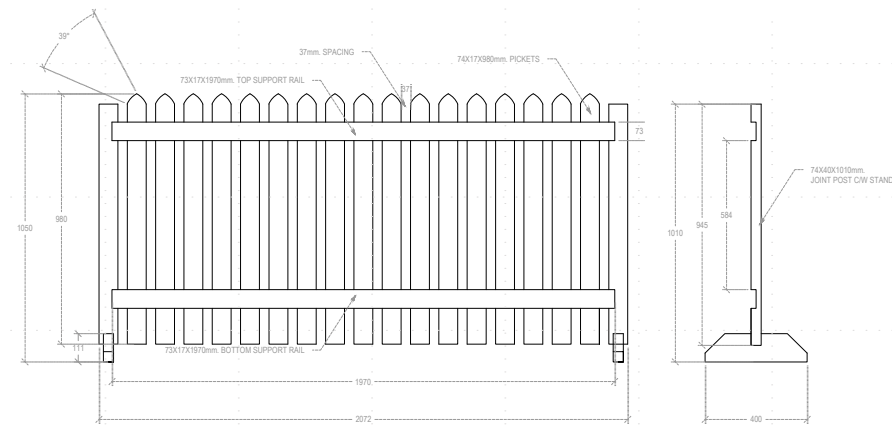
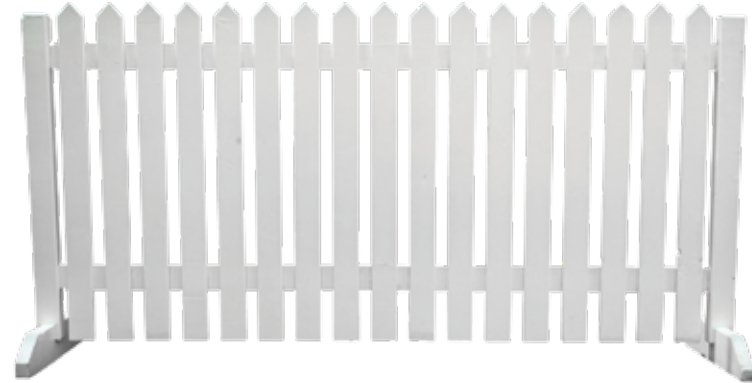
Note: For 40' Wide Load Trailer transportation will be a Night Load 1:00-5:00am  
For 40' Standard Trailer transportation can travel during the day except 6:00am – 8:30am, 13:00-15:00, 17:30-20:00



## Fencing and Barriers



Picket Fencing



Specifications	
Height	1m x 2m(L)
Base Width	0.4m
Material Type	Timber Wood
Offloading Requirement	3 Ton Hiab or 3 Ton Forklift +

Note: For 40' Wide Load Trailer transportation will be a Night Load 1:00-5:00am  
For 40' Standard Trailer transportation can travel during the day except 6:00am – 8:30am, 13:00-15:00, 17:30-20:00



# Miscellaneous

## Picnic Benches

Specifications	
Table Top	
Measurement	L – 205cm   H – 76cm   W – 75cm

Specifications	
Foot Print	
Measurement	L – 200cm   H – 44.5cm   W – 24cm
Weight	30 to 40kg
Offloading Requirement	3 Ton Hiab or 3 Ton Forklift +



Note: For 40' Wide Load Trailer transportation will be a Night Load 1:00-5:00am  
For 40' Standard Trailer transportation can travel during the day except 6:00am – 8:30am, 13:00-15:00, 17:30-20:00

#### UAE

Dubai	+971 4 454 4800
Abu Dhabi	+971 2 614 0100
Fujairah	+971 9 222 8163

#### KSA

Jubail	+966 13 340 4888
Dammam	+966 13 340 4888
Riyadh	+966 11 810 8931
Jeddah	+966 12 641 1862
Yanbu	+966 14 321 1666
Turaif	+966 13 340 4888
Jazan	+966 13 340 4888

#### KUWAIT

Fahaheel	+965 222 55282
----------	----------------

#### QATAR

Doha	+974 4 460 2320
------	-----------------

#### OMAN

Muscat	+968 2 689 3082
Duqm	+968 2 689 3082

#### BAHRAIN

Manama	+973 172 80890
--------	----------------